



INTERNATIONAL GEMOLOGICAL INSTITUTE

ELECTRONIC COPY



April 11, 2026

IGI Report Number LG791653108

ROUND BRILLIANT
LABORATORY GROWN DIAMOND
5.12 - 5.15 X 3.10 MM

Carat Weight 0.50 CARAT
Color Grade E
Clarity Grade VVS 1
Cut Grade EXCELLENT
Polish VERY GOOD
Symmetry EXCELLENT
Fluorescence NONE
Inscription(s) IGI LG791653108

Comments: This Laboratory Grown Diamond was created by Chemical Vapor Deposition (CVD) growth process. Type IIa

LABORATORY GROWN DIAMOND REPORT

April 11, 2026
IGI Report Number LG791653108
Description LABORATORY GROWN DIAMOND
Shape and Cutting Style ROUND BRILLIANT
Measurements 5.12 - 5.15 X 3.10 MM

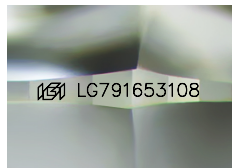
GRADING RESULTS

Carat Weight 0.50 CARAT
Color Grade E
Clarity Grade VVS 1
Cut Grade EXCELLENT

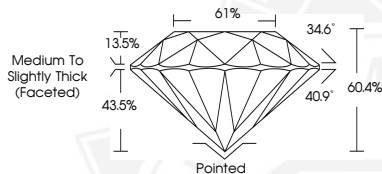
ADDITIONAL GRADING INFORMATION

Polish VERY GOOD
Symmetry EXCELLENT
Fluorescence NONE
Inscription(s) IGI LG791653108

Comments: This Laboratory Grown Diamond was created by Chemical Vapor Deposition (CVD) growth process.
Type IIa



Sample Image Used



April 11, 2026

IGI Report Number LG791653108

ROUND BRILLIANT
LABORATORY GROWN DIAMOND
5.12 - 5.15 X 3.10 MM

Carat Weight 0.50 CARAT
Color Grade E
Clarity Grade VVS 1
Cut Grade EXCELLENT
Polish VERY GOOD
Symmetry EXCELLENT
Fluorescence NONE
Inscription(s) IGI LG791653108

Comments: This Laboratory Grown Diamond was created by Chemical Vapor Deposition (CVD) growth process. Type IIa



THIS DOCUMENT WAS PRODUCED WITH THE FOLLOWING SECURITY MEASURES: SPECIAL DOCUMENT PAPER, INK SCREENS, WATERMARK, BACKGROUND DESIGNS, HOLOGRAM AND OTHER SECURITY FEATURES NOT LISTED AND DO EXCEED DOCUMENT SECURITY INDUSTRY GUIDELINES.

For terms & conditions and to verify this report, please visit www.igi.org