



ELECTRONIC COPY

LG792602381
Report verification at igi.org



April 15, 2026
IGI Report Number LG792602381
Description LABORATORY GROWN DIAMOND
Shape and Cutting Style ROUND BRILLIANT
Measurements 7.46 - 7.48 X 4.61 MM
GRADING RESULTS
Carat Weight 1.57 CARAT
Color Grade E
Clarity Grade VVS 2
Cut Grade EXCELLENT

April 15, 2026
IGI Report Number LG792602381
Description LABORATORY GROWN DIAMOND
Shape and Cutting Style ROUND BRILLIANT
Measurements 7.46 - 7.48 X 4.61 MM

GRADING RESULTS

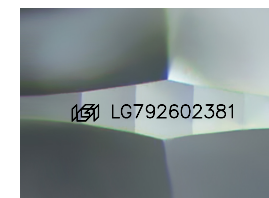
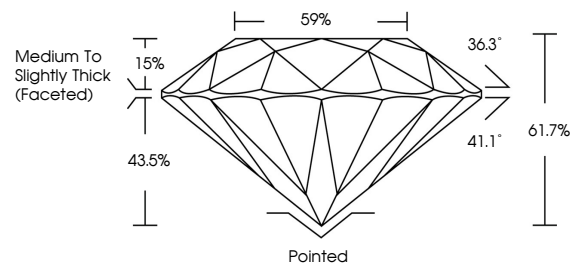
Carat Weight 1.57 CARAT
Color Grade E
Clarity Grade VVS 2
Cut Grade EXCELLENT

ADDITIONAL GRADING INFORMATION

Polish EXCELLENT
Symmetry EXCELLENT
Fluorescence NONE
Inscription(s) IGI LG792602381

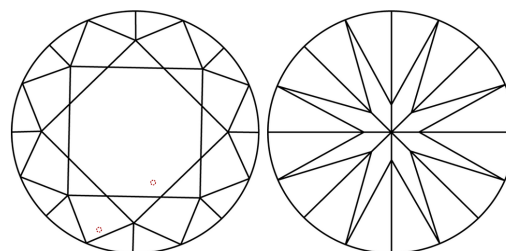
Comments: This Laboratory Grown Diamond was created by Chemical Vapor Deposition (CVD) growth process. Type IIa

PROPORTIONS



Sample Image Used

CLARITY CHARACTERISTICS



KEY TO SYMBOLS

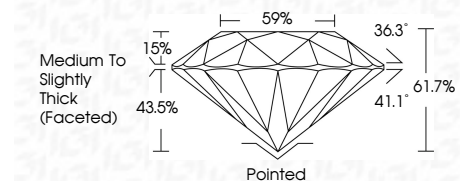
Red symbols indicate internal characteristics.
Green symbols indicate external characteristics.

COLOR

D E F G H I J Faint Very Light Light

CLARITY

FL IF VVS 1-2 VS 1-2 SI 1-2 I 1-3
Flawless Internally Flawless Very Very Slightly Included Very Slightly Included Slightly Included Included



ADDITIONAL GRADING INFORMATION

Polish EXCELLENT
Symmetry EXCELLENT
Fluorescence NONE
Inscription(s) IGI LG792602381
Comments: This Laboratory Grown Diamond was created by Chemical Vapor Deposition (CVD) growth process. Type IIa



April 15, 2026
IGI Report No LG792602381
ROUND BRILLIANT
1.57 CARAT E
1.57 CARAT E
VVS 2 EXCELLENT 61.7% 59%
Medium To Slightly Thick (Faceted)
Pointed EXCELLENT EXCELLENT NONE
None IGI LG792602381
Comments: This Laboratory Grown Diamond was created by Chemical Vapor Deposition (CVD) growth process. Type IIa