



LABORATORY GROWN DIAMOND REPORT

April 23, 2026
 IGI Report Number **LG792605614**
 Description **LABORATORY GROWN DIAMOND**
 Shape and Cutting Style **PEAR BRILLIANT**
 Measurements **8.71 X 5.49 X 3.33 MM**

GRADING RESULTS

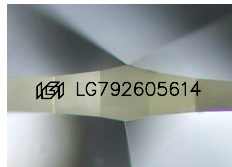
Carat Weight **0.93 CARAT**
 Color Grade **FANCY VIVID PINK**
 Clarity Grade **VS 2**

ADDITIONAL GRADING INFORMATION

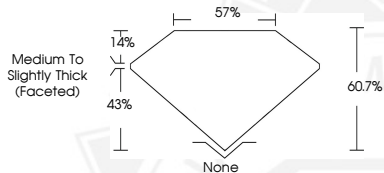
Polish **VERY GOOD**
 Symmetry **EXCELLENT**
 Fluorescence **SLIGHT**
 Inscription(s) **IGI LG792605614**

Comments: This Laboratory Grown Diamond was created by
 Chemical Vapor Deposition (CVD) growth process.
 Indications of post-growth treatment.

Secondary color: Brown



Sample Image Used



April 23, 2026
 IGI Report Number **LG792605614**
PEAR BRILLIANT
LABORATORY GROWN DIAMOND
8.71 X 5.49 X 3.33 MM
 Carat Weight **0.93 CARAT**
 Color Grade **FANCY VIVID PINK**
 Clarity Grade **VS 2**
 Polish **VERY GOOD**
 Symmetry **EXCELLENT**
 Fluorescence **SLIGHT**
 Inscription(s) **IGI LG792605614**

Comments: This Laboratory Grown
 Diamond was created by
 Chemical Vapor Deposition (CVD)
 growth process. Indications of
 post-growth treatment.
 Secondary color: Brown



April 23, 2026
 IGI Report Number **LG792605614**
PEAR BRILLIANT
LABORATORY GROWN DIAMOND
8.71 X 5.49 X 3.33 MM
 Carat Weight **0.93 CARAT**
 Color Grade **FANCY VIVID PINK**
 Clarity Grade **VS 2**
 Polish **VERY GOOD**
 Symmetry **EXCELLENT**
 Fluorescence **SLIGHT**
 Inscription(s) **IGI LG792605614**

Comments: This Laboratory Grown
 Diamond was created by
 Chemical Vapor Deposition (CVD)
 growth process. Indications of
 post-growth treatment.
 Secondary color: Brown



THIS DOCUMENT WAS PRODUCED WITH THE FOLLOWING SECURITY MEASURES: SPECIAL DOCUMENT PAPER, INK SCREENS, WATERMARK, BACKGROUND DESIGNS, HOLOGRAM AND OTHER SECURITY FEATURES NOT LISTED AND DO EXCEED DOCUMENT SECURITY INDUSTRY GUIDELINES.