



ELECTRONIC COPY

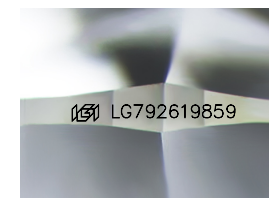
LG792619859 Report verification at igi.org



April 24, 2026 IGI Report Number LG792619859 Description LABORATORY GROWN DIAMOND Shape and Cutting Style ROUND BRILLIANT Measurements 8.29 - 8.34 X 5.04 MM

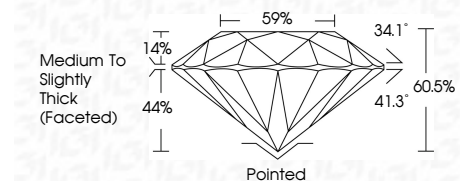
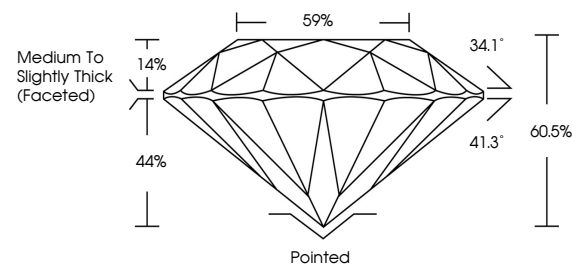
GRADING RESULTS

Carat Weight 2.11 CARATS Color Grade G Clarity Grade VS 1 Cut Grade IDEAL

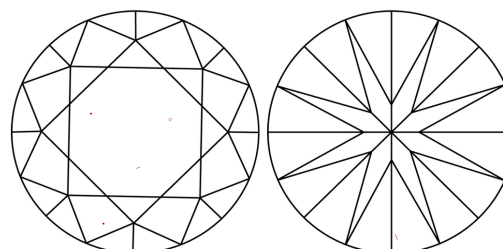


Sample Image Used

PROPORTIONS



CLARITY CHARACTERISTICS



KEY TO SYMBOLS

Red symbols indicate internal characteristics. Green symbols indicate external characteristics.

COLOR

D E F G H I J Faint Very Light Light

CLARITY

FL IF VS 1-2 VS 2-3 SI 1-2 I 1-3 Flawless Internally Flawless Very Very Slightly Included Very Slightly Included Slightly Included Included

ADDITIONAL GRADING INFORMATION

Polish EXCELLENT Symmetry EXCELLENT Fluorescence NONE Inscription(s) (IGI) LG792619859 Comments: This Laboratory Grown Diamond was created by Chemical Vapor Deposition (CVD) growth process. Type IIa

April 24, 2026 IGI Report Number LG792619859 Description LABORATORY GROWN DIAMOND Shape and Cutting Style ROUND BRILLIANT Measurements 8.29 - 8.34 X 5.04 MM

GRADING RESULTS

Carat Weight 2.11 CARATS Color Grade G Clarity Grade VS 1 Cut Grade IDEAL

ADDITIONAL GRADING INFORMATION

Polish EXCELLENT Symmetry EXCELLENT Fluorescence NONE Inscription(s) (IGI) LG792619859

Comments: This Laboratory Grown Diamond was created by Chemical Vapor Deposition (CVD) growth process. Type IIa



April 24, 2026 IGI Report No LG792619859 ROUND BRILLIANT 8.29 - 8.34 X 5.04 MM 2.11 CARATS G VS 1 IDEAL 60.5% 59% Medium To Slightly Thick (Faceted) Pointed EXCELLENT EXCELLENT NONE (IGI) LG792619859 Comments: This Laboratory Grown Diamond was created by Chemical Vapor Deposition (CVD) growth process. Type IIa