



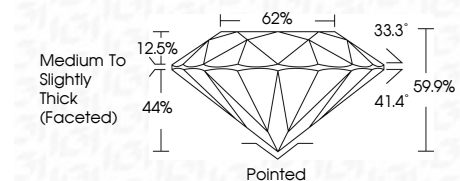
ELECTRONIC COPY

LG792633091 Report verification at igi.org



April 30, 2026 IGI Report Number LG792633091 Description LABORATORY GROWN DIAMOND Shape and Cutting Style ROUND BRILLIANT Measurements 9.33 - 9.41 X 5.61 MM

GRADING RESULTS Carat Weight 3.03 CARATS Color Grade FANCY VIVID PINK Clarity Grade SI 1 Cut Grade EXCELLENT



ADDITIONAL GRADING INFORMATION Polish EXCELLENT Symmetry EXCELLENT Fluorescence SLIGHT Inscription(s) IGI LG792633091 Comments: This Laboratory Grown Diamond was created by Chemical Vapor Deposition (CVD) growth process. Indications of post-growth treatment.



April 30, 2026 IGI Report No LG792633091 ROUND BRILLIANT 9.33 - 9.41 X 5.61 MM 3.03 CARATS FANCY VIVID PINK SI 1 EXCELLENT 59.9% 62% Medium To Slightly Thick (Faceted) Pointed EXCELLENT EXCELLENT SLIGHT IGI LG792633091 Comments: This Laboratory Grown Diamond was created by Chemical Vapor Deposition (CVD) growth process. Indications of post-growth treatment.

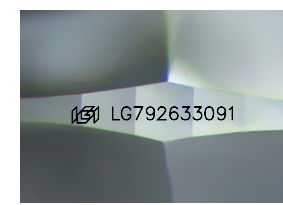
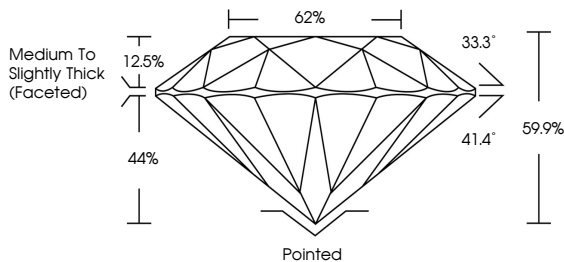
April 30, 2026 IGI Report Number LG792633091 Description LABORATORY GROWN DIAMOND Shape and Cutting Style ROUND BRILLIANT Measurements 9.33 - 9.41 X 5.61 MM

GRADING RESULTS Carat Weight 3.03 CARATS Color Grade FANCY VIVID PINK Clarity Grade SI 1 Cut Grade EXCELLENT

ADDITIONAL GRADING INFORMATION Polish EXCELLENT Symmetry EXCELLENT Fluorescence SLIGHT Inscription(s) IGI LG792633091

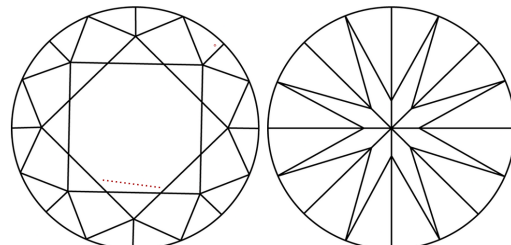
Comments: This Laboratory Grown Diamond was created by Chemical Vapor Deposition (CVD) growth process. Indications of post-growth treatment.

PROPORTIONS



Sample Image Used

CLARITY CHARACTERISTICS



KEY TO SYMBOLS Red symbols indicate internal characteristics. Green symbols indicate external characteristics.

Color scale table with categories D, E, F, G, H, I, J, Faint, Very Light, Light

Clarity scale table with categories FL, IF, VS 1-2, VS 1-2, SI 1-2, I 1-3

