



Light Performance Grade: Exceptional



April 16, 2026 IGI Report Number LG792639057 Description LABORATORY GROWN DIAMOND Shape and Cutting Style OVAL BRILLIANT Measurements 13.60 X 9.09 X 5.54 MM GRADING RESULTS Carat Weight 4.28 CARATS Color Grade E Clarity Grade VS 1

ELECTRONIC COPY LABORATORY GROWN DIAMOND REPORT

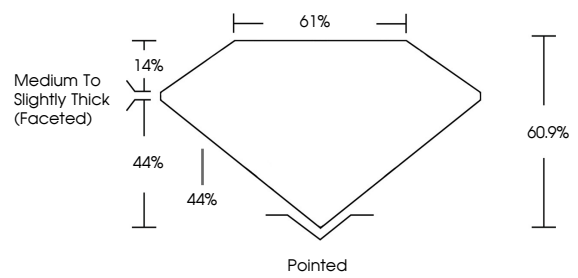
April 16, 2026 IGI Report Number LG792639057 Description LABORATORY GROWN DIAMOND Shape and Cutting Style OVAL BRILLIANT Measurements 13.60 x 9.09 x 5.54 mm

GRADING RESULTS Carat Weight 4.28 CARATS Color Grade E Clarity Grade VS 1

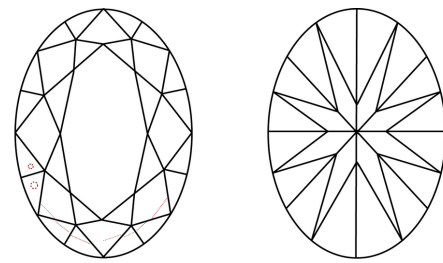
ADDITIONAL GRADING INFORMATION Polish EXCELLENT Symmetry EXCELLENT Fluorescence NONE

Inscription(s) IGI LG792639057 Comments: This Laboratory Grown Diamond was created by Chemical Vapor Deposition (CVD) growth process. Type IIa

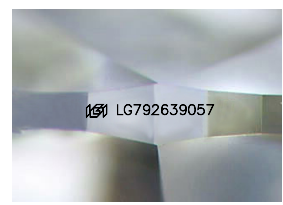
PROPORTIONS



CLARITY CHARACTERISTICS



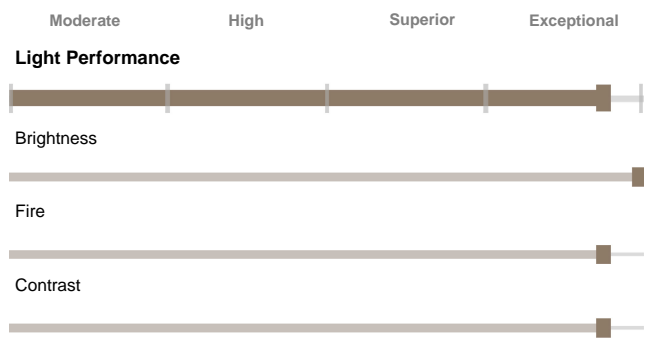
KEY TO SYMBOLS Red symbols indicate internal characteristics. Green symbols indicate external characteristics.



Sample Image Used

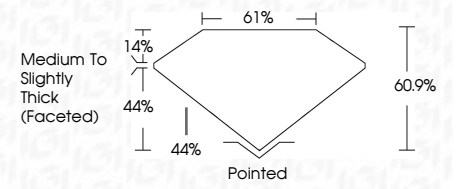


Structured Light Environment Representation



COLOR D E F G H I J Faint Very Light Light

CLARITY FL IF VS 1-2 VS 1-2 SI 1-2 I 1-3 Flawless Internally Flawless Very Very Slightly Included Very Slightly Included Slightly Included Included



ADDITIONAL GRADING INFORMATION Polish EXCELLENT Symmetry EXCELLENT Fluorescence NONE Inscription(s) IGI LG792639057 Comments: This Laboratory Grown Diamond was created by Chemical Vapor Deposition (CVD) growth process. Type IIa



April 16, 2026 IGI Report No LG792639057 OVAL BRILLIANT 4.28 CARATS E VS 1 60.9% 61% Medium To Slightly Thick (Faceted) Pointed EXCELLENT EXCELLENT NONE IGI LG792639057 13.60 X 9.09 X 5.54 MM Carat Weight Color Grade Clarity Grade Table Depth 60.9% 61% Girdle Medium To Slightly Thick (Faceted) Culet Pointed Polish EXCELLENT Symmetry EXCELLENT Fluorescence NONE Inscription(s) IGI LG792639057 Comments: This Laboratory Grown Diamond was created by Chemical Vapor Deposition (CVD) growth process. Type IIa

