



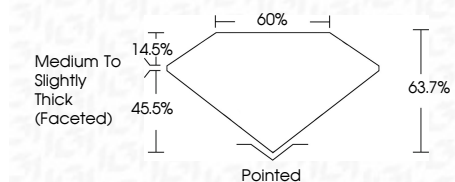
ELECTRONIC COPY

LG792642846 Report verification at igi.org



April 18, 2026 IGI Report Number LG792642846 Description LABORATORY GROWN DIAMOND Shape and Cutting Style PEAR BRILLIANT Measurements 10.70 X 7.00 X 4.46 MM

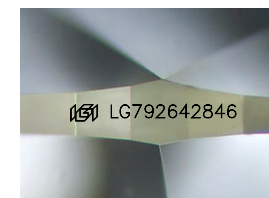
GRADING RESULTS Carat Weight 2.02 CARATS Color Grade E Clarity Grade VS 1



ADDITIONAL GRADING INFORMATION Polish EXCELLENT Symmetry EXCELLENT Fluorescence NONE Inscription(s) IGI LG792642846 Comments: This Laboratory Grown Diamond was created by Chemical Vapor Deposition (CVD) growth process. Type IIa

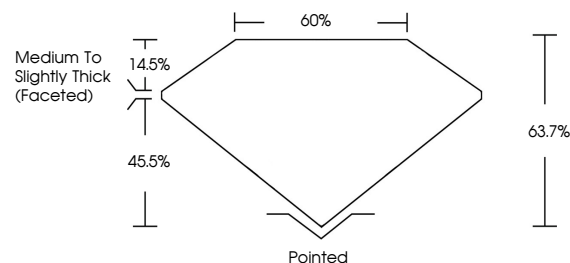


April 18, 2026 IGI Report No LG792642846 PEAR BRILLIANT 10.70 X 7.00 X 4.46 MM 2.02 CARATS E VS 1 63.7% 45.5% Medium to Slightly Thick (Faceted) Pointed EXCELLENT EXCELLENT NONE IGI LG792642846 Comments: This Laboratory Grown Diamond was created by Chemical Vapor Deposition (CVD) growth process. Type IIa

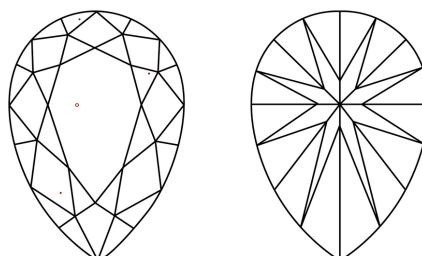


Sample Image Used

PROPORTIONS



CLARITY CHARACTERISTICS



KEY TO SYMBOLS

Red symbols indicate internal characteristics. Green symbols indicate external characteristics.

COLOR

D E F G H I J Faint Very Light Light

CLARITY

FL IF VS 1-2 VS 1-2 SI 1-2 I 1-3 Flawless Internally Flawless Very Very Slightly Included Very Slightly Included Slightly Included Included

