



ELECTRONIC COPY

LG792643994
Report verification at igi.org



April 23, 2026
IGI Report Number **LG792643994**

Description **LABORATORY GROWN DIAMOND**

Shape and Cutting Style **OVAL MODIFIED BRILLIANT**

Measurements **11.55 X 8.30 X 5.18 MM**

GRADING RESULTS

Carat Weight **4.02 CARATS**

Color Grade **FANCY VIVID YELLOW**

Clarity Grade **SI 1**

LABORATORY GROWN DIAMOND REPORT

April 23, 2026

IGI Report Number **LG792643994**

Description **LABORATORY GROWN DIAMOND**

Shape and Cutting Style **OVAL MODIFIED BRILLIANT**

Measurements **11.55 X 8.30 X 5.18 MM**

GRADING RESULTS

Carat Weight **4.02 CARATS**

Color Grade **FANCY VIVID YELLOW**

Clarity Grade **SI 1**

ADDITIONAL GRADING INFORMATION

Polish **EXCELLENT**

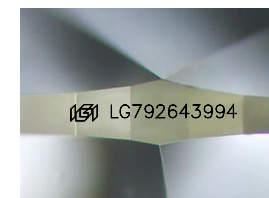
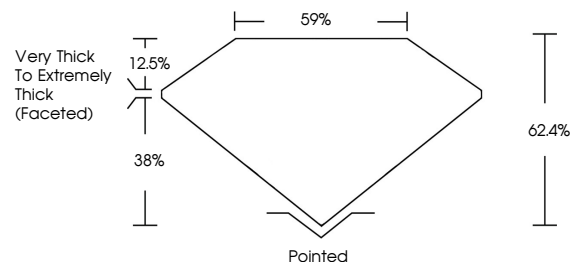
Symmetry **EXCELLENT**

Fluorescence **NONE**

Inscription(s) **LG792643994**

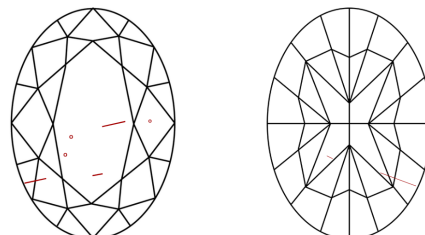
Comments: This Laboratory Grown Diamond was created by Chemical Vapor Deposition (CVD) growth process.

PROPORTIONS



Sample Image Used

CLARITY CHARACTERISTICS



KEY TO SYMBOLS

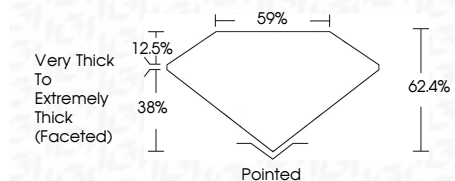
Red symbols indicate internal characteristics.
Green symbols indicate external characteristics.

COLOR

D E F G H I J Faint Very Light Light

CLARITY

FL	IF	VS ¹⁻²	VS ¹⁻²	SI ¹⁻²	I ¹⁻³
Flawless	Internally Flawless	Very Very Slightly Included	Very Slightly Included	Slightly Included	Included



ADDITIONAL GRADING INFORMATION

Polish **EXCELLENT**

Symmetry **EXCELLENT**

Fluorescence **NONE**

Inscription(s) **LG792643994**

Comments: This Laboratory Grown Diamond was created by Chemical Vapor Deposition (CVD) growth process.



April 23, 2026
IGI Report No **LG792643994**
OVAL MODIFIED BRILLIANT

4.02 CARATS
Carat Weight
FANCY VIVID YELLOW
Color Grade

Clarity Grade **SI 1**
Depth **62.4%**
Table **59%**
Girdle **Very Thick to Extremely Thick (Faceted)**

Culet **Pointed**
Polish **EXCELLENT**
Symmetry **EXCELLENT**
Fluorescence **NONE**
Inscription(s) **LG792643994**

Comments: This Laboratory Grown Diamond was created by Chemical Vapor Deposition (CVD) growth process.