



**ELECTRONIC COPY**

LG792650161  
Report verification at igi.org



April 27, 2026

IGI Report Number **LG792650161**

Description **LABORATORY GROWN DIAMOND**

Shape and Cutting Style **ROUND BRILLIANT**

Measurements **6.56 - 6.58 X 4.09 MM**

**GRADING RESULTS**

Carat Weight **1.09 CARAT**

Color Grade **E**

Clarity Grade **VVS 2**

Cut Grade **IDEAL**

April 27, 2026

IGI Report Number **LG792650161**

Description **LABORATORY GROWN DIAMOND**

Shape and Cutting Style **ROUND BRILLIANT**

Measurements **6.56 - 6.58 X 4.09 MM**

**GRADING RESULTS**

Carat Weight **1.09 CARAT**

Color Grade **E**

Clarity Grade **VVS 2**

Cut Grade **IDEAL**

**ADDITIONAL GRADING INFORMATION**

Polish **EXCELLENT**

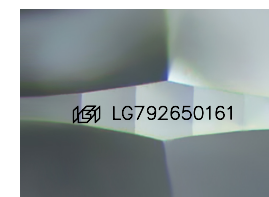
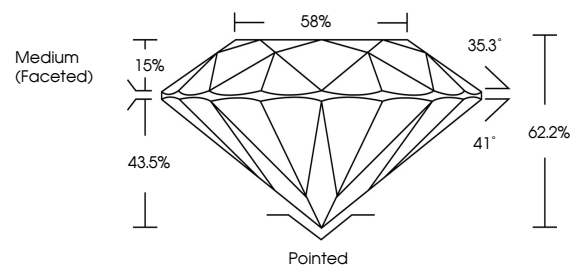
Symmetry **EXCELLENT**

Fluorescence **NONE**

Inscription(s) **IGI LG792650161**

Comments: This Laboratory Grown Diamond was created by Chemical Vapor Deposition (CVD) growth process. Type IIa

**PROPORTIONS**



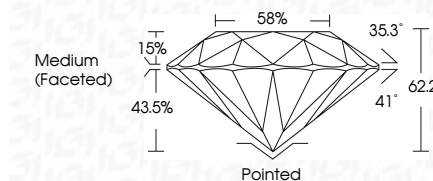
Sample Image Used

**COLOR**

D E F G H I J Faint Very Light Light

**CLARITY**

FL	IF	VS <sup>1-2</sup>	VS <sup>1-2</sup>	SI <sup>1-2</sup>	I <sup>1-3</sup>
Flawless	Internally Flawless	Very Very Slightly Included	Very Slightly Included	Slightly Included	Included



**ADDITIONAL GRADING INFORMATION**

Polish **EXCELLENT**

Symmetry **EXCELLENT**

Fluorescence **NONE**

Inscription(s) **IGI LG792650161**

Comments: This Laboratory Grown Diamond was created by Chemical Vapor Deposition (CVD) growth process. Type IIa



**IGI**



April 27, 2026  
IGI Report No LG792650161  
**ROUND BRILLIANT**  
6.56 - 6.58 X 4.09 MM  
1.09 CARAT  
E  
VVS 2  
IDEAL  
62.2%  
88%  
Medium (Faceted)

Pointed  
EXCELLENT  
EXCELLENT  
NONE  
IGI LG792650161

Cutler  
Polish  
Symmetry  
Fluorescence  
Inscription(s)

Comments: This Laboratory Grown Diamond was created by Chemical Vapor Deposition (CVD) growth process. Type IIa