



ELECTRONIC COPY

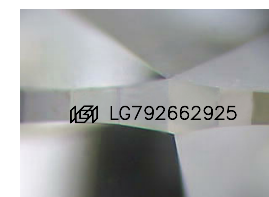
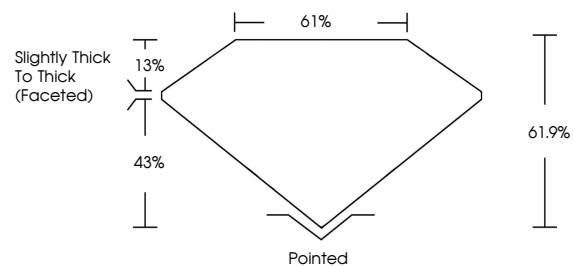
LG792662925
Report verification at igi.org



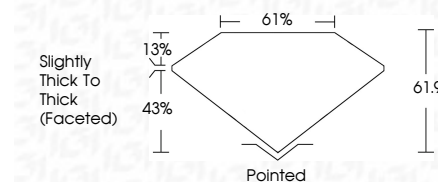
May 6, 2026
IGI Report Number **LG792662925**
Description **LABORATORY GROWN DIAMOND**
Shape and Cutting Style **OVAL BRILLIANT**
Measurements **8.99 X 6.41 X 3.97 MM**
GRADING RESULTS
Carat Weight **1.45 CARAT**
Color Grade **FANCY INTENSE BROWN PINK**
Clarity Grade **VVS 2**

May 6, 2026
IGI Report Number **LG792662925**
Description **LABORATORY GROWN DIAMOND**
Shape and Cutting Style **OVAL BRILLIANT**
Measurements **8.99 X 6.41 X 3.97 MM**
GRADING RESULTS
Carat Weight **1.45 CARAT**
Color Grade **FANCY INTENSE BROWN PINK**
Clarity Grade **VVS 2**

PROPORTIONS



Sample Image Used



ADDITIONAL GRADING INFORMATION
Polish **VERY GOOD**
Symmetry **EXCELLENT**
Fluorescence **SLIGHT**
Inscription(s) **IGI LG792662925**

Comments: This Laboratory Grown Diamond was created by Chemical Vapor Deposition (CVD) growth process. Indications of post-growth treatment.

COLOR

D E F G H I J Faint Very Light Light

CLARITY

FL	IF	VS ¹⁻²	VS ¹⁻²	SI ¹⁻²	I ¹⁻³
Flawless	Internally Flawless	Very Very Slightly Included	Very Slightly Included	Slightly Included	Included

ADDITIONAL GRADING INFORMATION

Polish **VERY GOOD**
Symmetry **EXCELLENT**
Fluorescence **SLIGHT**
Inscription(s) **IGI LG792662925**
Comments: This Laboratory Grown Diamond was created by Chemical Vapor Deposition (CVD) growth process. Indications of post-growth treatment.



May 6, 2026
IGI Report No **LG792662925**
OVAL BRILLIANT
Carat Weight **1.45 CARAT**
Color Grade **FANCY INTENSE BROWN PINK**
Clarity Grade **VVS 2**
Depth **61.9%**
Table **61%**
Girdle **Slightly Thick To Thick (Faceted)**
Culet **Pointed**
Polish **VERY GOOD**
Symmetry **EXCELLENT**
Fluorescence **SLIGHT**
Inscription(s) **IGI LG792662925**

Comments: This Laboratory Grown Diamond was created by Chemical Vapor Deposition (CVD) growth process. Indications of post-growth treatment.