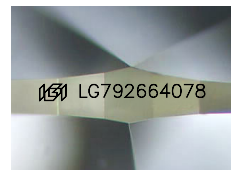




May 14, 2026  
IGI Report Number **LG792664078**  
**PEAR BRILLIANT**  
LABORATORY GROWN DIAMOND  
7.13 X 4.44 X 2.70 MM  
Carat Weight **0.50 CARAT**  
Color Grade **E**  
Clarity Grade **VS 2**  
Polish **VERY GOOD**  
Symmetry **VERY GOOD**  
Fluorescence **NONE**  
Inscription(s) **IGI LG792664078**

**LABORATORY GROWN DIAMOND REPORT**

May 14, 2026  
IGI Report Number **LG792664078**  
Description **LABORATORY GROWN DIAMOND**  
Shape and Cutting Style **PEAR BRILLIANT**  
Measurements **7.13 X 4.44 X 2.70 MM**



Sample Image Used

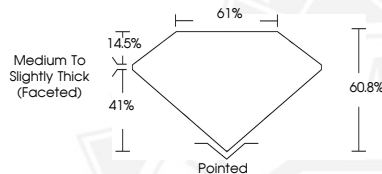
**GRADING RESULTS**

Carat Weight **0.50 CARAT**  
Color Grade **E**  
Clarity Grade **VS 2**

**ADDITIONAL GRADING INFORMATION**

Polish **VERY GOOD**  
Symmetry **VERY GOOD**  
Fluorescence **NONE**  
Inscription(s) **IGI LG792664078**

Comments: This Laboratory Grown Diamond was created by Chemical Vapor Deposition (CVD) growth process.  
Type IIa



May 14, 2026  
IGI Report Number **LG792664078**  
**PEAR BRILLIANT**  
LABORATORY GROWN DIAMOND  
7.13 X 4.44 X 2.70 MM  
Carat Weight **0.50 CARAT**  
Color Grade **E**  
Clarity Grade **VS 2**  
Polish **VERY GOOD**  
Symmetry **VERY GOOD**  
Fluorescence **NONE**  
Inscription(s) **IGI LG792664078**  
Comments: This Laboratory Grown Diamond was created by Chemical Vapor Deposition (CVD) growth process. Type IIa

THIS DOCUMENT WAS PRODUCED WITH THE FOLLOWING SECURITY MEASURES: SPECIAL DOCUMENT PAPER, INK SCREENS, WATERMARK, BACKGROUND DESIGNS, HOLOGRAM AND OTHER SECURITY FEATURES NOT LISTED AND DO EXCEED DOCUMENT SECURITY INDUSTRY GUIDELINES.