



**ELECTRONIC COPY**

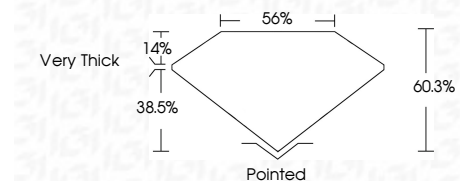
LG792664626  
Report verification at igi.org



May 22, 2026  
IGI Report Number **LG792664626**  
Description **LABORATORY GROWN DIAMOND**  
Shape and Cutting Style **OVAL POLYGON STEP CUT**  
Measurements **13.73 X 9.00 X 5.43 MM**

**GRADING RESULTS**

Carat Weight **5.06 CARATS**  
Color Grade **G**  
Clarity Grade **VS 1**



**ADDITIONAL GRADING INFORMATION**

Polish **EXCELLENT**  
Symmetry **EXCELLENT**  
Fluorescence **NONE**  
Inscription(s) **(IGI) LG792664626**  
Comments: This Laboratory Grown Diamond was created by Chemical Vapor Deposition (CVD) growth process. Type IIa



May 22, 2026  
IGI Report No LG792664626  
OVAL POLYGON STEP CUT  
13.73 X 9.00 X 5.43 MM  
5.06 CARATS  
G  
VS 1  
60.3%  
38.5%  
Very Thick  
Pointed  
EXCELLENT  
EXCELLENT  
NONE  
Inscription(s)  
(IGI) LG792664626  
Comments: This Laboratory Grown Diamond was created by Chemical Vapor Deposition (CVD) growth process. Type IIa

**LABORATORY GROWN DIAMOND REPORT**

May 22, 2026  
IGI Report Number **LG792664626**  
Description **LABORATORY GROWN DIAMOND**  
Shape and Cutting Style **OVAL POLYGON STEP CUT**  
Measurements **13.73 X 9.00 X 5.43 MM**

**GRADING RESULTS**

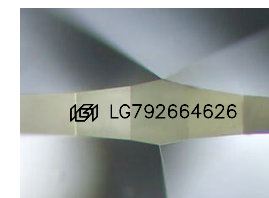
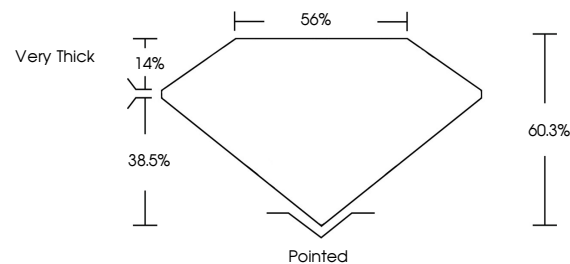
Carat Weight **5.06 CARATS**  
Color Grade **G**  
Clarity Grade **VS 1**

**ADDITIONAL GRADING INFORMATION**

Polish **EXCELLENT**  
Symmetry **EXCELLENT**  
Fluorescence **NONE**  
Inscription(s) **(IGI) LG792664626**

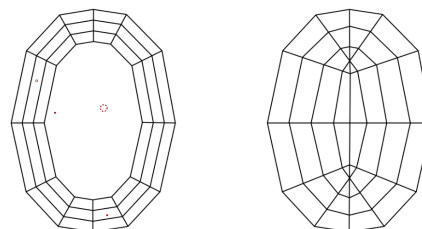
Comments: This Laboratory Grown Diamond was created by Chemical Vapor Deposition (CVD) growth process. Type IIa

**PROPORTIONS**



Sample Image Used

**CLARITY CHARACTERISTICS**



**KEY TO SYMBOLS**

Red symbols indicate internal characteristics.  
Green symbols indicate external characteristics.

**COLOR**

D E F G H I J Faint Very Light Light

**CLARITY**

FL	IF	VS <sup>1-2</sup>	VS <sup>1-2</sup>	SI <sup>1-2</sup>	I <sup>1-3</sup>
Flawless	Internally Flawless	Very Very Slightly Included	Very Slightly Included	Slightly Included	Included

