



**LABORATORY GROWN DIAMOND REPORT**

May 9, 2026  
 IGI Report Number **LG792669444**  
 Description **LABORATORY GROWN DIAMOND**  
 Shape and Cutting Style **PEAR BRILLIANT**  
 Measurements **7.55 X 4.65 X 2.92 MM**

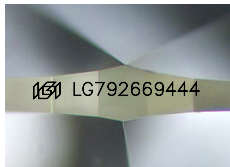
**GRADING RESULTS**

Carat Weight **0.60 CARAT**  
 Color Grade **E**  
 Clarity Grade **VVS 1**

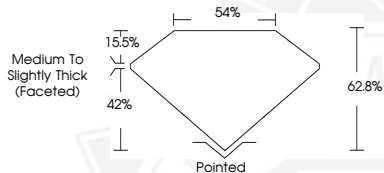
**ADDITIONAL GRADING INFORMATION**

Polish **VERY GOOD**  
 Symmetry **VERY GOOD**  
 Fluorescence **NONE**  
 Inscription(s) **IGI LG792669444**

Comments: This Laboratory Grown Diamond was created by Chemical Vapor Deposition (CVD) growth process. Type IIa



Sample Image Used



May 9, 2026  
 IGI Report Number **LG792669444**  
**PEAR BRILLIANT**  
**LABORATORY GROWN DIAMOND**  
**7.55 X 4.65 X 2.92 MM**  
 Carat Weight **0.60 CARAT**  
 Color Grade **E**  
 Clarity Grade **VVS 1**  
 Polish **VERY GOOD**  
 Symmetry **VERY GOOD**  
 Fluorescence **NONE**  
 Inscription(s) **IGI LG792669444**

Comments: This Laboratory Grown Diamond was created by Chemical Vapor Deposition (CVD) growth process. Type IIa



May 9, 2026  
 IGI Report Number **LG792669444**  
**PEAR BRILLIANT**  
**LABORATORY GROWN DIAMOND**  
**7.55 X 4.65 X 2.92 MM**  
 Carat Weight **0.60 CARAT**  
 Color Grade **E**  
 Clarity Grade **VVS 1**  
 Polish **VERY GOOD**  
 Symmetry **VERY GOOD**  
 Fluorescence **NONE**  
 Inscription(s) **IGI LG792669444**

Comments: This Laboratory Grown Diamond was created by Chemical Vapor Deposition (CVD) growth process. Type IIa



THIS DOCUMENT WAS PRODUCED WITH THE FOLLOWING SECURITY MEASURES: SPECIAL DOCUMENT PAPER, INK SCREENS, WATERMARK, BACKGROUND DESIGNS, HOLOGRAM AND OTHER SECURITY FEATURES NOT LISTED AND DO EXCEED DOCUMENT SECURITY INDUSTRY GUIDELINES.