



**ELECTRONIC COPY**

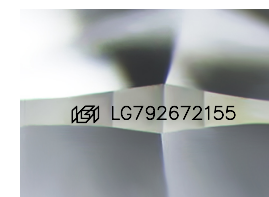
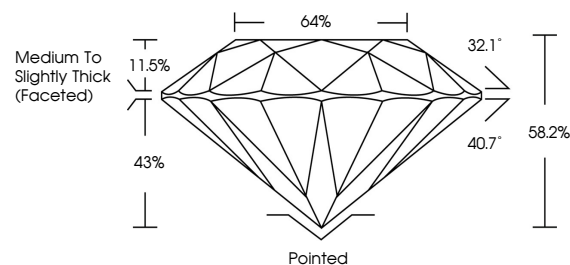
LG792672155  
Report verification at igi.org



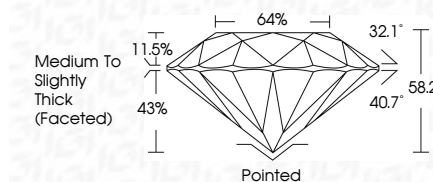
April 29, 2026  
IGI Report Number **LG792672155**  
Description **LABORATORY GROWN DIAMOND**  
Shape and Cutting Style **ROUND BRILLIANT**  
Measurements **11.81 - 11.87 X 6.90 MM**  
**GRADING RESULTS**  
Carat Weight **6.01 CARATS**  
Color Grade **E**  
Clarity Grade **VS 2**  
Cut Grade **VERY GOOD**

April 29, 2026  
IGI Report Number **LG792672155**  
Description **LABORATORY GROWN DIAMOND**  
Shape and Cutting Style **ROUND BRILLIANT**  
Measurements **11.81 - 11.87 X 6.90 MM**  
**GRADING RESULTS**  
Carat Weight **6.01 CARATS**  
Color Grade **E**  
Clarity Grade **VS 2**  
Cut Grade **VERY GOOD**

**PROPORTIONS**



Sample Image Used



**ADDITIONAL GRADING INFORMATION**

Polish **EXCELLENT**  
Symmetry **EXCELLENT**  
Fluorescence **NONE**  
Inscription(s) **IGI LG792672155**

Comments: This Laboratory Grown Diamond was created by Chemical Vapor Deposition (CVD) growth process. Type IIa

**ADDITIONAL GRADING INFORMATION**

Polish **EXCELLENT**  
Symmetry **EXCELLENT**  
Fluorescence **NONE**  
Inscription(s) **IGI LG792672155**  
Comments: This Laboratory Grown Diamond was created by Chemical Vapor Deposition (CVD) growth process. Type IIa

**COLOR**

D E F G H I J Faint Very Light Light

**CLARITY**

FL	IF	VS <sup>1-2</sup>	VS <sup>1-2</sup>	SI <sup>1-2</sup>	I <sup>1-3</sup>
Flawless	Internally Flawless	Very Very Slightly Included	Very Slightly Included	Slightly Included	Included



**IGI**



April 29, 2026  
IGI Report No LG792672155  
**ROUND BRILLIANT**  
11.81 - 11.87 X 6.90 MM  
6.01 CARATS  
E  
VS 2  
VERY GOOD  
58.2%  
64%  
Medium To Slightly Thick (Faceted)  
Pointed  
EXCELLENT  
EXCELLENT  
NONE  
IGI LG792672155  
Comments: This Laboratory Grown Diamond was created by Chemical Vapor Deposition (CVD) growth process. Type IIa