



ELECTRONIC COPY

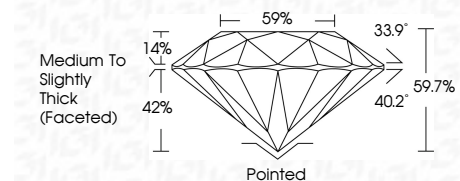
LG792674167 Report verification at igi.org



May 13, 2026 IGI Report Number LG792674167 Description LABORATORY GROWN DIAMOND Shape and Cutting Style ROUND BRILLIANT Measurements 7.28 - 7.31 X 4.35 MM

GRADING RESULTS

Carat Weight 1.43 CARAT Color Grade D Clarity Grade VVS 2 Cut Grade IDEAL



ADDITIONAL GRADING INFORMATION

Polish EXCELLENT Symmetry EXCELLENT Fluorescence NONE Inscription(s) LG792674167 Comments: As Grown - No indication of post-growth treatment. This Laboratory Grown Diamond was created by High Pressure High Temperature (HPHT) growth process. Type II



May 13, 2026 IGI Report No LG792674167 ROUND BRILLIANT 7.28 - 7.31 X 4.35 MM 1.43 CARAT D VVS 2 IDEAL 59.7% 59% Medium To Slightly Thick (Faceted) Pointed EXCELLENT EXCELLENT NONE LG792674167

LABORATORY GROWN DIAMOND REPORT

May 13, 2026 IGI Report Number LG792674167 Description LABORATORY GROWN DIAMOND Shape and Cutting Style ROUND BRILLIANT Measurements 7.28 - 7.31 X 4.35 MM

GRADING RESULTS

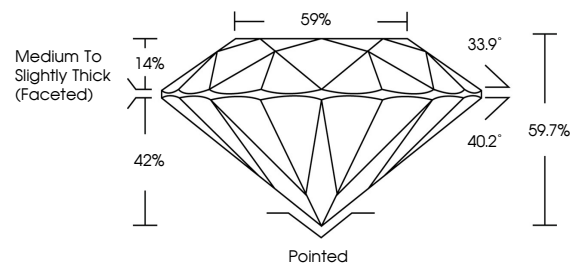
Carat Weight 1.43 CARAT Color Grade D Clarity Grade VVS 2 Cut Grade IDEAL

ADDITIONAL GRADING INFORMATION

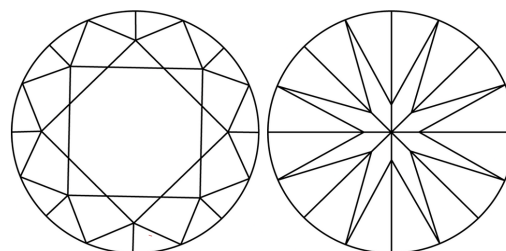
Polish EXCELLENT Symmetry EXCELLENT Fluorescence NONE Inscription(s) LG792674167

Comments: As Grown - No indication of post-growth treatment. This Laboratory Grown Diamond was created by High Pressure High Temperature (HPHT) growth process. Type II

PROPORTIONS

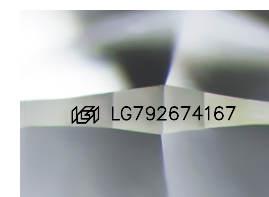


CLARITY CHARACTERISTICS



KEY TO SYMBOLS

Red symbols indicate internal characteristics. Green symbols indicate external characteristics.



Sample Image Used

COLOR

D E F G H I J Faint Very Light Light

CLARITY

FL IF VVS 1-2 VS 1-2 SI 1-2 I 1-3 Flawless Internally Flawless Very Very Slightly Included Very Slightly Included Slightly Included Included



May 13, 2026 IGI Report No LG792674167 ROUND BRILLIANT 7.28 - 7.31 X 4.35 MM 1.43 CARAT D VVS 2 IDEAL 59.7% 59% Medium To Slightly Thick (Faceted) Pointed EXCELLENT EXCELLENT NONE LG792674167

Comments: As Grown - No indication of post-growth treatment. This Laboratory Grown Diamond was created by High Pressure High Temperature (HPHT) growth process. Type II