



ELECTRONIC COPY

LG792699818
Report verification at igi.org



April 18, 2026

IGI Report Number LG792699818

Description LABORATORY GROWN DIAMOND

Shape and Cutting Style ROUND BRILLIANT

Measurements 7.19 - 7.24 X 4.45 MM

GRADING RESULTS

Carat Weight 1.41 CARAT

Color Grade E

Clarity Grade VS 1

Cut Grade IDEAL

April 18, 2026

IGI Report Number LG792699818

Description LABORATORY GROWN DIAMOND

Shape and Cutting Style ROUND BRILLIANT

Measurements 7.19 - 7.24 X 4.45 MM

GRADING RESULTS

Carat Weight 1.41 CARAT

Color Grade E

Clarity Grade VS 1

Cut Grade IDEAL

ADDITIONAL GRADING INFORMATION

Polish EXCELLENT

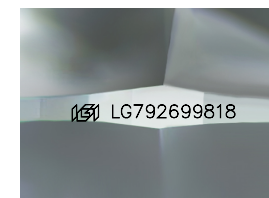
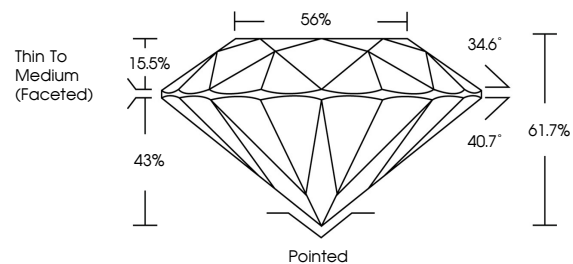
Symmetry EXCELLENT

Fluorescence NONE

Inscription(s) LG792699818

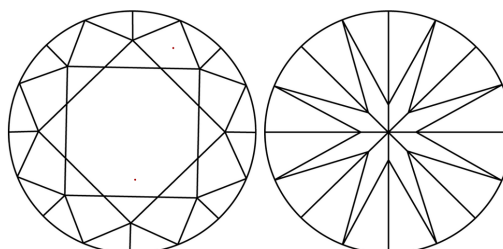
Comments: This Laboratory Grown Diamond was created by Chemical Vapor Deposition (CVD) growth process. Type IIa

PROPORTIONS



Sample Image Used

CLARITY CHARACTERISTICS



KEY TO SYMBOLS

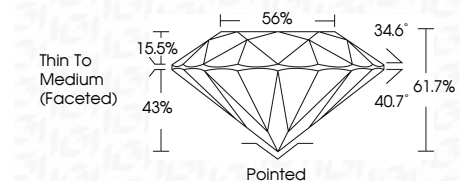
Red symbols indicate internal characteristics. Green symbols indicate external characteristics.

COLOR

D E F G H I J Faint Very Light Light

CLARITY

Table with columns: FL, IF, VS 1-2, VS 1-2, SI 1-2, I 1-3. Rows: Flawless, Internally Flawless, Very Very Slightly Included, Very Slightly Included, Slightly Included, Included



ADDITIONAL GRADING INFORMATION

Polish EXCELLENT

Symmetry EXCELLENT

Fluorescence NONE

Inscription(s) LG792699818

Comments: This Laboratory Grown Diamond was created by Chemical Vapor Deposition (CVD) growth process. Type IIa



Summary table of report details: April 18, 2026, IGI Report No LG792699818, ROUND BRILLIANT, 7.19 - 7.24 X 4.45 MM, 1.41 CARAT, E, VS 1, IDEAL, 61.7%, 56%, Thin To Medium (Faceted), Pointed, EXCELLENT, EXCELLENT, NONE, LG792699818. Comments: This Laboratory Grown Diamond was created by Chemical Vapor Deposition (CVD) growth process. Type IIa