



**ELECTRONIC COPY**

LG793605012  
Report verification at igi.org



April 18, 2026  
IGI Report Number **LG793605012**  
Description **LABORATORY GROWN DIAMOND**  
Shape and Cutting Style **CUSHION MODIFIED BRILLIANT**  
Measurements **10.09 X 7.59 X 5.07 MM**  
**GRADING RESULTS**  
Carat Weight **3.09 CARATS**  
Color Grade **E**  
Clarity Grade **VVS 2**

**LABORATORY GROWN DIAMOND REPORT**

April 18, 2026  
IGI Report Number **LG793605012**  
Description **LABORATORY GROWN DIAMOND**  
Shape and Cutting Style **CUSHION MODIFIED BRILLIANT**  
Measurements **10.09 X 7.59 X 5.07 MM**

**GRADING RESULTS**

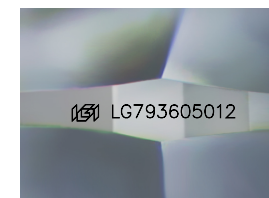
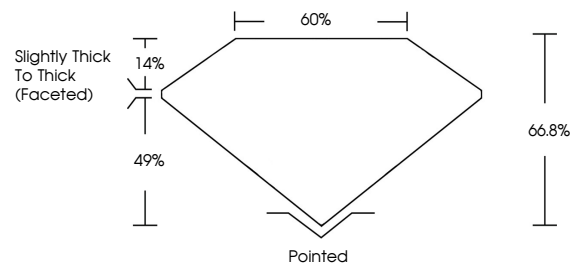
Carat Weight **3.09 CARATS**  
Color Grade **E**  
Clarity Grade **VVS 2**

**ADDITIONAL GRADING INFORMATION**

Polish **EXCELLENT**  
Symmetry **EXCELLENT**  
Fluorescence **NONE**  
Inscription(s) **IGI LG793605012**

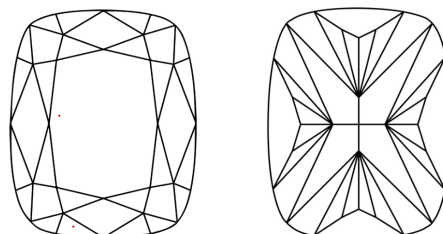
Comments: This Laboratory Grown Diamond was created by Chemical Vapor Deposition (CVD) growth process. Type IIa

**PROPORTIONS**



Sample Image Used

**CLARITY CHARACTERISTICS**



**KEY TO SYMBOLS**

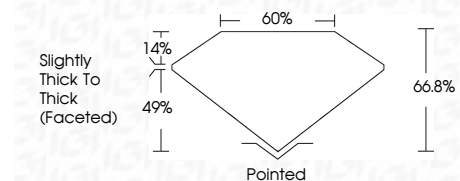
Red symbols indicate internal characteristics.  
Green symbols indicate external characteristics.

**COLOR**

D E F G H I J Faint Very Light Light

**CLARITY**

FL	IF	VVS <sup>1-2</sup>	VS <sup>1-2</sup>	SI <sup>1-2</sup>	I <sup>1-3</sup>
Flawless	Internally Flawless	Very Very Slightly Included	Very Slightly Included	Slightly Included	Included



**ADDITIONAL GRADING INFORMATION**

Polish **EXCELLENT**  
Symmetry **EXCELLENT**  
Fluorescence **NONE**  
Inscription(s) **IGI LG793605012**  
Comments: This Laboratory Grown Diamond was created by Chemical Vapor Deposition (CVD) growth process. Type IIa



April 18, 2026  
IGI Report No **LG793605012**  
**CUSHION MODIFIED BRILLIANT**  
**10.09 X 7.59 X 5.07 MM**  
**3.09 CARATS**  
**E**  
**VVS 2**  
**66.8%**  
**49%**  
**Slightly Thick To Thick (Faceted)**  
**Pointed**  
**EXCELLENT**  
**EXCELLENT**  
**NONE**  
**IGI LG793605012**  
Comments: This Laboratory Grown Diamond was created by Chemical Vapor Deposition (CVD) growth process. Type IIa