



ELECTRONIC COPY

LG793614662 Report verification at igi.org



April 21, 2026 IGI Report Number LG793614662 Description LABORATORY GROWN DIAMOND Shape and Cutting Style PEAR BRILLIANT Measurements 13.83 X 9.02 X 5.68 MM GRADING RESULTS Carat Weight 4.09 CARATS Color Grade E Clarity Grade VS 1

April 21, 2026 IGI Report Number LG793614662 Description LABORATORY GROWN DIAMOND Shape and Cutting Style PEAR BRILLIANT Measurements 13.83 X 9.02 X 5.68 MM

GRADING RESULTS

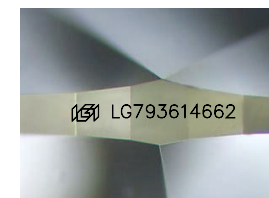
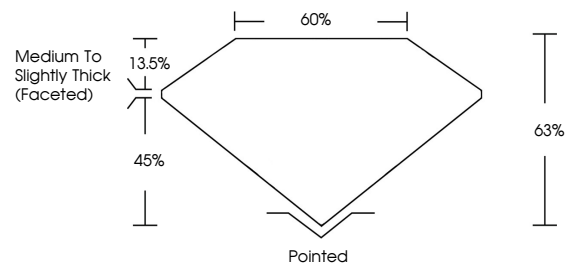
Carat Weight 4.09 CARATS Color Grade E Clarity Grade VS 1

ADDITIONAL GRADING INFORMATION

Polish EXCELLENT Symmetry EXCELLENT Fluorescence NONE Inscription(s) IGI LG793614662

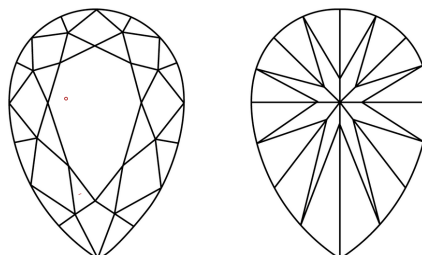
Comments: This Laboratory Grown Diamond was created by Chemical Vapor Deposition (CVD) growth process. Type IIa

PROPORTIONS



Sample Image Used

CLARITY CHARACTERISTICS



KEY TO SYMBOLS

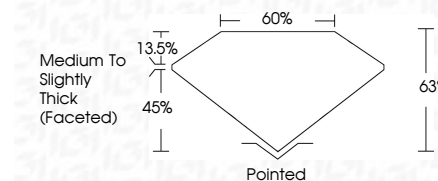
Red symbols indicate internal characteristics. Green symbols indicate external characteristics.

COLOR

D E F G H I J Faint Very Light Light

CLARITY

FL IF VS 1-2 VS 2-3 SI 1-2 I 1-3 Flawless Internally Flawless Very Very Slightly Included Very Slightly Included Slightly Included Included



ADDITIONAL GRADING INFORMATION

Polish EXCELLENT Symmetry EXCELLENT Fluorescence NONE Inscription(s) IGI LG793614662 Comments: This Laboratory Grown Diamond was created by Chemical Vapor Deposition (CVD) growth process. Type IIa



April 21, 2026 IGI Report No LG793614662 PEAR BRILLIANT 4.09 CARATS E VS 1 63% 45% Medium to Slightly Thick (Faceted) Pointed EXCELLENT EXCELLENT NONE IGI LG793614662 Comments: This Laboratory Grown Diamond was created by Chemical Vapor Deposition (CVD) growth process. Type IIa