



**ELECTRONIC COPY**

LG793622462  
Report verification at igi.org



May 7, 2026  
IGI Report Number **LG793622462**  
Description **LABORATORY GROWN DIAMOND**  
Shape and Cutting Style **ROUND BRILLIANT**  
Measurements **6.39 - 6.45 X 3.96 MM**  
**GRADING RESULTS**  
Carat Weight **1.03 CARAT**  
Color Grade **FANCY INTENSE YELLOW**  
Clarity Grade **VS 1**  
Cut Grade **IDEAL**

May 7, 2026  
IGI Report Number **LG793622462**  
Description **LABORATORY GROWN DIAMOND**  
Shape and Cutting Style **ROUND BRILLIANT**  
Measurements **6.39 - 6.45 X 3.96 MM**

**GRADING RESULTS**

Carat Weight **1.03 CARAT**  
Color Grade **FANCY INTENSE YELLOW**  
Clarity Grade **VS 1**  
Cut Grade **IDEAL**

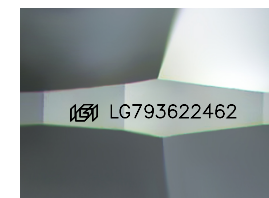
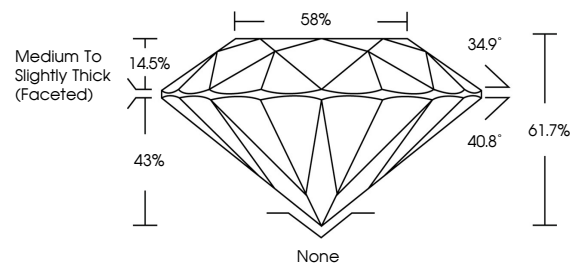
**ADDITIONAL GRADING INFORMATION**

Polish **VERY GOOD**  
Symmetry **EXCELLENT**  
Fluorescence **VERY SLIGHT**  
Inscription(s) **IGI LG793622462**

Comments: This Laboratory Grown Diamond was created by Chemical Vapor Deposition (CVD) growth process.  
Indications of post-growth treatment.

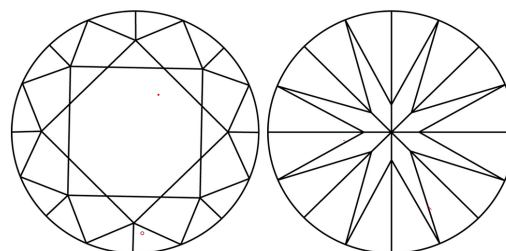
Secondary color: Brown

**PROPORTIONS**



Sample Image Used

**CLARITY CHARACTERISTICS**



**KEY TO SYMBOLS**

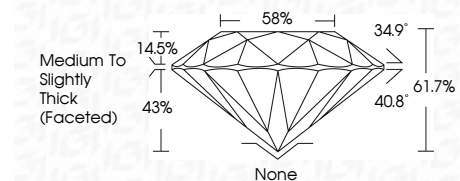
Red symbols indicate internal characteristics.  
Green symbols indicate external characteristics.

**COLOR**

D E F G H I J Faint Very Light Light

**CLARITY**

FL	IF	VS <sup>1-2</sup>	VS <sup>1-2</sup>	SI <sup>1-2</sup>	I <sup>1-3</sup>
Flawless	Internally Flawless	Very Very Slightly Included	Very Slightly Included	Slightly Included	Included



**ADDITIONAL GRADING INFORMATION**

Polish **VERY GOOD**  
Symmetry **EXCELLENT**  
Fluorescence **VERY SLIGHT**  
Inscription(s) **IGI LG793622462**  
Comments: This Laboratory Grown Diamond was created by Chemical Vapor Deposition (CVD) growth process.  
Indications of post-growth treatment.

Secondary color: Brown



**IGI**

May 7, 2026  
IGI Report No **LG793622462**  
**ROUND BRILLIANT**  
Carat Weight **1.03 CARAT**  
Color Grade **FANCY INTENSE YELLOW**  
Clarity Grade **VS 1**  
Depth **IDEAL**  
Table **61.7%**  
Girdle **58%**  
Medium To Slightly Thick (Faceted)  
None  
Cutler **VERY GOOD**  
Polish **EXCELLENT**  
Symmetry **EXCELLENT**  
Fluorescence **VERY SLIGHT**  
Inscription(s) **IGI LG793622462**  
Comments: This Laboratory Grown Diamond was created by Chemical Vapor Deposition (CVD) growth process.  
Indications of post-growth treatment.  
Secondary color: Brown