



ELECTRONIC COPY

LG793622675
Report verification at igi.org



April 23, 2026

IGI Report Number **LG793622675**

Description **LABORATORY GROWN DIAMOND**

Shape and Cutting Style **CUT CORNERED
RECTANGULAR MODIFIED
BRILLIANT**

Measurements **11.26 X 7.78 X 5.09 MM**

GRADING RESULTS

Carat Weight **4.03 CARATS**

Color Grade **FANCY VIVID BLUE**

Clarity Grade **VS 1**

April 23, 2026

IGI Report Number **LG793622675**

Description **LABORATORY GROWN DIAMOND**

Shape and Cutting Style **CUT CORNERED RECTANGULAR
MODIFIED BRILLIANT**

Measurements **11.26 X 7.78 X 5.09 MM**

GRADING RESULTS

Carat Weight **4.03 CARATS**

Color Grade **FANCY VIVID BLUE**

Clarity Grade **VS 1**

ADDITIONAL GRADING INFORMATION

Polish **EXCELLENT**

Symmetry **EXCELLENT**

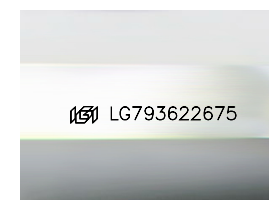
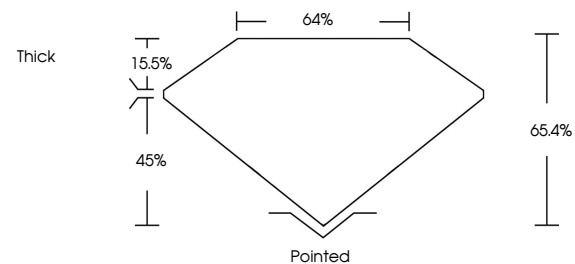
Fluorescence **NONE**

Inscription(s) **IGI LG793622675**

Comments: This Laboratory Grown Diamond was created by Chemical Vapor Deposition (CVD) growth process.

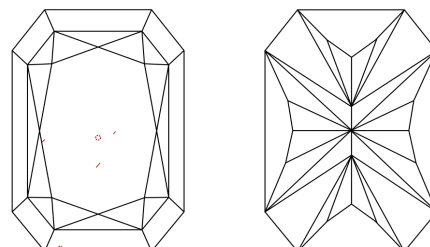
Indications of post-growth treatment.

PROPORTIONS



Sample Image Used

CLARITY CHARACTERISTICS



KEY TO SYMBOLS

Red symbols indicate internal characteristics.
Green symbols indicate external characteristics.

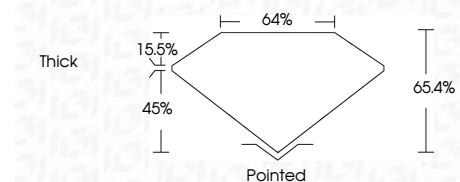
COLOR

D E F G H I J Faint Very Light Light

CLARITY

FL IF VS¹⁻² VS¹⁻² SI¹⁻² I¹⁻³

Flawless Internally Flawless Very Very Slightly Included Very Slightly Included Slightly Included Included



ADDITIONAL GRADING INFORMATION

Polish **EXCELLENT**

Symmetry **EXCELLENT**

Fluorescence **NONE**

Inscription(s) **IGI LG793622675**

Comments: This Laboratory Grown Diamond was created by Chemical Vapor Deposition (CVD) growth process. Indications of post-growth treatment.



IGI



April 23, 2026
IGI Report No LG793622675
CUT CORNERED RECT. MODIFIED BRILLIANT

11.26 X 7.78 X 5.09 MM
4.03 CARATS
FANCY VIVID BLUE
VS 1
65.4%
45%
64%
Thick

Pointed
EXCELLENT
EXCELLENT
NONE
IGI LG793622675

Comments: This Laboratory Grown Diamond was created by Chemical Vapor Deposition (CVD) growth process. Indications of post-growth treatment.