



LABORATORY GROWN DIAMOND REPORT

April 23, 2026
 IGI Report Number **LG793622977**
 Description **LABORATORY GROWN DIAMOND**
 Shape and Cutting Style **PEAR BRILLIANT**
 Measurements **5.70 X 3.71 X 2.39 MM**

GRADING RESULTS

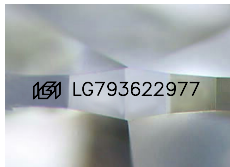
Carat Weight **0.32 CARAT**
 Color Grade **FANCY VIVID YELLOW**
 Clarity Grade **VS 2**

ADDITIONAL GRADING INFORMATION

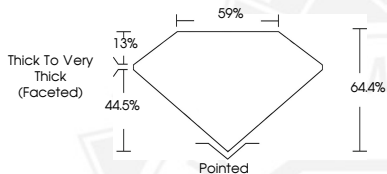
Polish **VERY GOOD**
 Symmetry **VERY GOOD**
 Fluorescence **NONE**
 Inscription(s) **IGI LG793622977**

Comments: As Grown - No indication of post-growth treatment. This Laboratory Grown Diamond was created by High Pressure High Temperature (HPHT) growth process.

Secondary color: Orange



Sample Image Used



April 23, 2026
 IGI Report Number **LG793622977**
PEAR BRILLIANT
LABORATORY GROWN DIAMOND
5.70 X 3.71 X 2.39 MM
 Carat Weight **0.32 CARAT**
 Color Grade **FANCY VIVID YELLOW**
 Clarity Grade **VS 2**
 Polish **VERY GOOD**
 Symmetry **VERY GOOD**
 Fluorescence **NONE**
 Inscription(s) **IGI LG793622977**

Comments: As Grown - No indication of post-growth treatment. This Laboratory Grown Diamond was created by High Pressure High Temperature (HPHT) growth process. Secondary color: Orange



April 23, 2026
 IGI Report Number **LG793622977**
PEAR BRILLIANT
LABORATORY GROWN DIAMOND
5.70 X 3.71 X 2.39 MM
 Carat Weight **0.32 CARAT**
 Color Grade **FANCY VIVID YELLOW**
 Clarity Grade **VS 2**
 Polish **VERY GOOD**
 Symmetry **VERY GOOD**
 Fluorescence **NONE**
 Inscription(s) **IGI LG793622977**

Comments: As Grown - No indication of post-growth treatment. This Laboratory Grown Diamond was created by High Pressure High Temperature (HPHT) growth process. Secondary color: Orange



THIS DOCUMENT WAS PRODUCED WITH THE FOLLOWING SECURITY MEASURES: SPECIAL DOCUMENT PAPER, INK SCREENS, WATERMARK, BACKGROUND DESIGNS, HOLOGRAM AND OTHER SECURITY FEATURES NOT LISTED AND DO EXCEED DOCUMENT SECURITY INDUSTRY GUIDELINES.