



**INTERNATIONAL
GEMOLOGICAL
INSTITUTE**

ELECTRONIC COPY

LABORATORY GROWN DIAMOND REPORT

April 23, 2026
 IGI Report Number **LG793622986**
 Description **LABORATORY GROWN DIAMOND**
 Shape and Cutting Style **PEAR BRILLIANT**
 Measurements **7.01 X 4.52 X 2.68 MM**

GRADING RESULTS

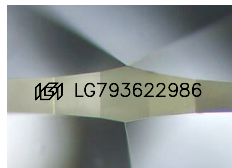
Carat Weight **0.51 CARAT**
 Color Grade **FANCY VIVID ORANGE**
 Clarity Grade **VS 2**

ADDITIONAL GRADING INFORMATION

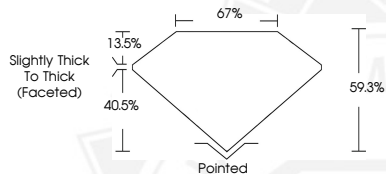
Polish **VERY GOOD**
 Symmetry **VERY GOOD**
 Fluorescence **NONE**
 Inscription(s) **IGI LG793622986**

Comments: As Grown - No indication of post-growth treatment. This Laboratory Grown Diamond was created by High Pressure High Temperature (HPHT) growth process.

Secondary color: Brown



Sample Image Used



April 23, 2026
 IGI Report Number **LG793622986**
PEAR BRILLIANT
LABORATORY GROWN DIAMOND
7.01 X 4.52 X 2.68 MM
 Carat Weight **0.51 CARAT**
 Color Grade **FANCY VIVID ORANGE**
 Clarity Grade **VS 2**
 Polish **VERY GOOD**
 Symmetry **VERY GOOD**
 Fluorescence **NONE**
 Inscription(s) **IGI LG793622986**

Comments: As Grown - No indication of post-growth treatment. This Laboratory Grown Diamond was created by High Pressure High Temperature (HPHT) growth process. Secondary color: Brown



April 23, 2026
 IGI Report Number **LG793622986**
PEAR BRILLIANT
LABORATORY GROWN DIAMOND
7.01 X 4.52 X 2.68 MM
 Carat Weight **0.51 CARAT**
 Color Grade **FANCY VIVID ORANGE**
 Clarity Grade **VS 2**
 Polish **VERY GOOD**
 Symmetry **VERY GOOD**
 Fluorescence **NONE**
 Inscription(s) **IGI LG793622986**

Comments: As Grown - No indication of post-growth treatment. This Laboratory Grown Diamond was created by High Pressure High Temperature (HPHT) growth process. Secondary color: Brown



THIS DOCUMENT WAS PRODUCED WITH THE FOLLOWING SECURITY MEASURES: SPECIAL DOCUMENT PAPER, INK SCREENS, WATERMARK, BACKGROUND DESIGNS, HOLOGRAM AND OTHER SECURITY FEATURES NOT LISTED AND DO EXCEED DOCUMENT SECURITY INDUSTRY GUIDELINES.

For terms & conditions and to verify this report, please visit www.igi.org