



April 20, 2026

IGI Report Number LG793622996

**MARQUISE BRILLIANT**  
**LABORATORY GROWN DIAMOND**  
**7.25 X 3.85 X 2.27 MM**

Carat Weight **0.38 CARAT**  
Color Grade **G**  
Clarity Grade **VVS 2**  
Polish **EXCELLENT**  
Symmetry **VERY GOOD**  
Fluorescence **NONE**  
Inscription(s) **IGI LG793622996**

Comments: As Grown - No indication of post-growth treatment. This Laboratory Grown Diamond was created by High Pressure High Temperature (HPHT) growth process. Type II Faint Blue

**LABORATORY GROWN DIAMOND REPORT**

April 20, 2026  
IGI Report Number **LG793622996**  
Description **LABORATORY GROWN DIAMOND**  
Shape and Cutting Style **MARQUISE BRILLIANT**  
Measurements **7.25 X 3.85 X 2.27 MM**

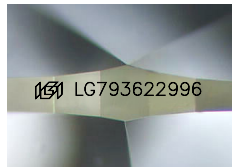
**GRADING RESULTS**

Carat Weight **0.38 CARAT**  
Color Grade **G**  
Clarity Grade **VVS 2**

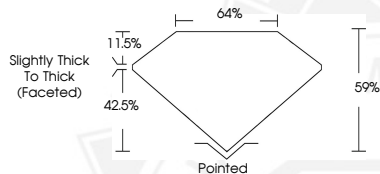
**ADDITIONAL GRADING INFORMATION**

Polish **EXCELLENT**  
Symmetry **VERY GOOD**  
Fluorescence **NONE**  
Inscription(s) **IGI LG793622996**

Comments: As Grown - No indication of post-growth treatment. This Laboratory Grown Diamond was created by High Pressure High Temperature (HPHT) growth process. Type II Faint Blue



Sample Image Used



April 20, 2026

IGI Report Number LG793622996

**MARQUISE BRILLIANT**  
**LABORATORY GROWN DIAMOND**  
**7.25 X 3.85 X 2.27 MM**

Carat Weight **0.38 CARAT**  
Color Grade **G**  
Clarity Grade **VVS 2**  
Polish **EXCELLENT**  
Symmetry **VERY GOOD**  
Fluorescence **NONE**  
Inscription(s) **IGI LG793622996**

Comments: As Grown - No indication of post-growth treatment. This Laboratory Grown Diamond was created by High Pressure High Temperature (HPHT) growth process. Type II Faint Blue



THIS DOCUMENT WAS PRODUCED WITH THE FOLLOWING SECURITY MEASURES: SPECIAL DOCUMENT PAPER, INK SCREENS, WATERMARK, BACKGROUND DESIGNS, HOLOGRAM AND OTHER SECURITY FEATURES NOT LISTED AND DO EXCEED DOCUMENT SECURITY INDUSTRY GUIDELINES.