



ELECTRONIC COPY

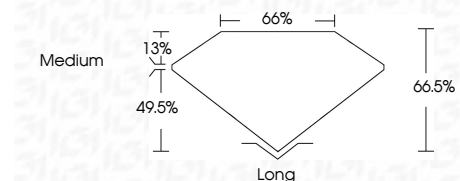
LG793625520
Report verification at igi.org



April 20, 2026
IGI Report Number **LG793625520**
Description **LABORATORY GROWN DIAMOND**

Shape and Cutting Style **EMERALD CUT**
Measurements **15.97 X 10.99 X 7.31 MM**

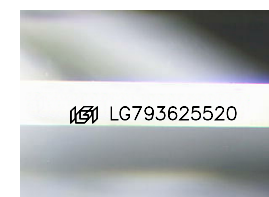
GRADING RESULTS
Carat Weight **12.60 CARATS**
Color Grade **G**
Clarity Grade **VVS 2**



ADDITIONAL GRADING INFORMATION
Polish **EXCELLENT**
Symmetry **EXCELLENT**
Fluorescence **NONE**
Inscription(s) **IGI LG793625520**
Comments: This Laboratory Grown Diamond was created by Chemical Vapor Deposition (CVD) growth process. Type IIa

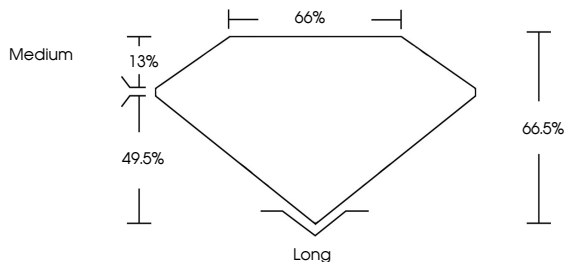


April 20, 2026
IGI Report No LG793625520
EMERALD CUT
15.97 X 10.99 X 7.31 MM
12.60 CARATS
Color Grade **G**
Clarity Grade **VVS 2**
Table **66.6%**
Girdle **65%**
Medium
Culet **Long**
Polish **EXCELLENT**
Symmetry **EXCELLENT**
Fluorescence **NONE**
Inscription(s) **IGI LG793625520**
Comments: This Laboratory Grown Diamond was created by Chemical Vapor Deposition (CVD) growth process. Type IIa

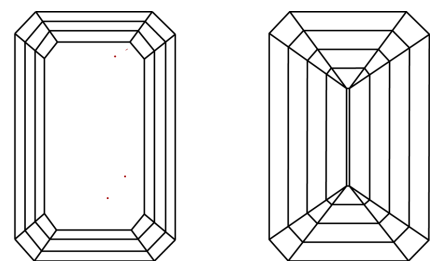


Sample Image Used

PROPORTIONS



CLARITY CHARACTERISTICS



KEY TO SYMBOLS
Red symbols indicate internal characteristics.
Green symbols indicate external characteristics.

COLOR

D	E	F	G	H	I	J	Faint	Very Light	Light
---	---	---	---	---	---	---	-------	------------	-------

CLARITY

FL	IF	VVS ¹⁻²	VS ¹⁻²	SI ¹⁻²	I ¹⁻³
Flawless	Internally Flawless	Very Very Slightly Included	Very Slightly Included	Slightly Included	Included

