



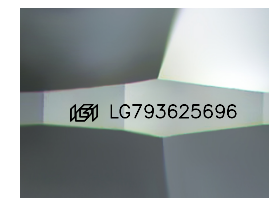
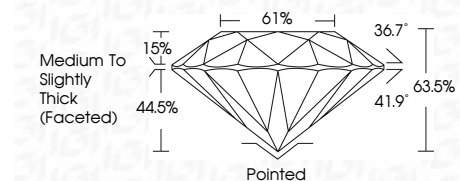
ELECTRONIC COPY

LG793625696
Report verification at igi.org



April 27, 2026
IGI Report Number LG793625696
Description LABORATORY GROWN DIAMOND
Shape and Cutting Style ROUND BRILLIANT
Measurements 6.42 - 6.49 X 4.10 MM

GRADING RESULTS
Carat Weight 1.06 CARAT
Color Grade E
Clarity Grade VS 1
Cut Grade VERY GOOD



Sample Image Used

ADDITIONAL GRADING INFORMATION
Polish VERY GOOD
Symmetry GOOD
Fluorescence NONE
Inscription(s) LG793625696
Comments: As Grown - No indication of post-growth treatment.
This Laboratory Grown Diamond was created by High Pressure High Temperature (HPHT) growth process.
Type II



April 27, 2026
IGI Report No LG793625696
ROUND BRILLIANT
6.42 - 6.49 X 4.10 MM
1.06 CARAT E
VERY GOOD VS 1
63.5% 61%
Medium To Slightly Thick (Faceted)
Pointed
VERY GOOD
GOOD
NONE
None
IGI LG793625696
Comments: As Grown - No indication of post-growth treatment. This Laboratory Grown Diamond was created by High Pressure High Temperature (HPHT) growth process. Type II

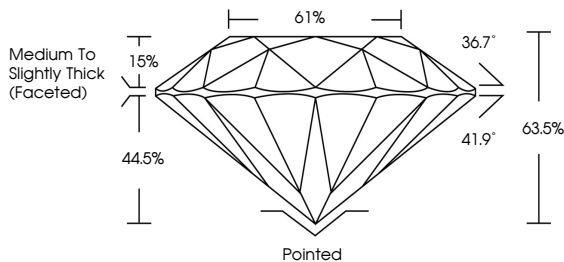
April 27, 2026
IGI Report Number LG793625696
Description LABORATORY GROWN DIAMOND
Shape and Cutting Style ROUND BRILLIANT
Measurements 6.42 - 6.49 X 4.10 MM

GRADING RESULTS
Carat Weight 1.06 CARAT
Color Grade E
Clarity Grade VS 1
Cut Grade VERY GOOD

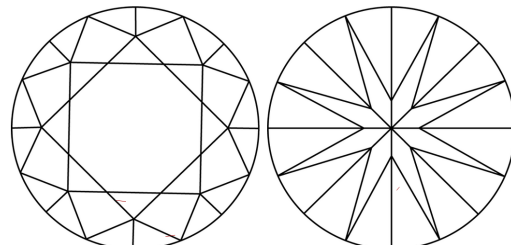
ADDITIONAL GRADING INFORMATION
Polish VERY GOOD
Symmetry GOOD
Fluorescence NONE
Inscription(s) LG793625696

Comments: As Grown - No indication of post-growth treatment.
This Laboratory Grown Diamond was created by High Pressure High Temperature (HPHT) growth process.
Type II

PROPORTIONS



CLARITY CHARACTERISTICS



KEY TO SYMBOLS
Red symbols indicate internal characteristics.
Green symbols indicate external characteristics.

Table with columns D, E, F, G, H, I, J, Faint, Very Light, Light

Table with columns FL, IF, VS 1-2, VS 1-2, SI 1-2, I 1-3 and corresponding descriptions like Flawless, Internally Flawless, etc.

