



ELECTRONIC COPY

LG793635660
Report verification at igi.org



April 23, 2026
IGI Report Number **LG793635660**
Description **LABORATORY GROWN DIAMOND**
Shape and Cutting Style **CUSHION MODIFIED BRILLIANT**
Measurements **10.36 X 7.49 X 4.97 MM**
GRADING RESULTS
Carat Weight **3.54 CARATS**
Color Grade **FANCY VIVID GREEN**
Clarity Grade **VVS 1**

LABORATORY GROWN DIAMOND REPORT

April 23, 2026
IGI Report Number **LG793635660**
Description **LABORATORY GROWN DIAMOND**
Shape and Cutting Style **CUSHION MODIFIED BRILLIANT**
Measurements **10.36 X 7.49 X 4.97 MM**

GRADING RESULTS

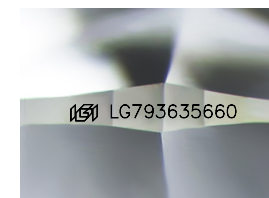
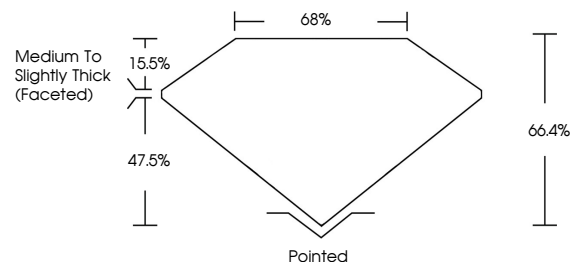
Carat Weight **3.54 CARATS**
Color Grade **FANCY VIVID GREEN**
Clarity Grade **VVS 1**

ADDITIONAL GRADING INFORMATION

Polish **EXCELLENT**
Symmetry **EXCELLENT**
Fluorescence **NONE**
Inscription(s) **IGI LG793635660**

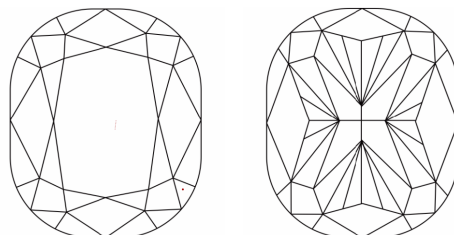
Comments: This Laboratory Grown Diamond was created by Chemical Vapor Deposition (CVD) growth process.
Indications of post-growth treatment.

PROPORTIONS



Sample Image Used

CLARITY CHARACTERISTICS



KEY TO SYMBOLS

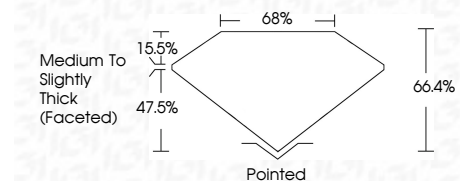
Red symbols indicate internal characteristics.
Green symbols indicate external characteristics.

COLOR

D E F G H I J Faint Very Light Light

CLARITY

FL	IF	VVS ¹⁻²	VS ¹⁻²	SI ¹⁻²	I ¹⁻³
Flawless	Internally Flawless	Very Very Slightly Included	Very Slightly Included	Slightly Included	Included



ADDITIONAL GRADING INFORMATION

Polish **EXCELLENT**
Symmetry **EXCELLENT**
Fluorescence **NONE**
Inscription(s) **IGI LG793635660**
Comments: This Laboratory Grown Diamond was created by Chemical Vapor Deposition (CVD) growth process.
Indications of post-growth treatment.



April 23, 2026
IGI Report No **LG793635660**
CUSHION MODIFIED BRILLIANT
10.36 X 7.49 X 4.97 MM
Carat Weight **3.54 CARATS**
Color Grade **FANCY VIVID GREEN**
Clarity Grade **VVS 1**
Depth **66.4%**
Table **68%**
Girdle **Medium to Slightly Thick (Faceted)**
Culet **Pointed**
Polish **EXCELLENT**
Symmetry **EXCELLENT**
Fluorescence **NONE**
Inscription(s) **IGI LG793635660**
Comments: This Laboratory Grown Diamond was created by Chemical Vapor Deposition (CVD) growth process.
Indications of post-growth treatment.