



**ELECTRONIC COPY**

LG793636104  
Report verification at igi.org



April 22, 2026

IGI Report Number **LG793636104**

Description **LABORATORY GROWN DIAMOND**

Shape and Cutting Style **PEAR BRILLIANT**

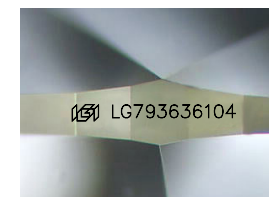
Measurements **8.45 X 5.62 X 3.61 MM**

**GRADING RESULTS**

Carat Weight **1.01 CARAT**

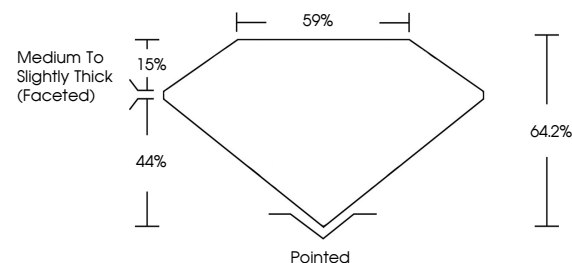
Color Grade **E**

Clarity Grade **VVS 2**

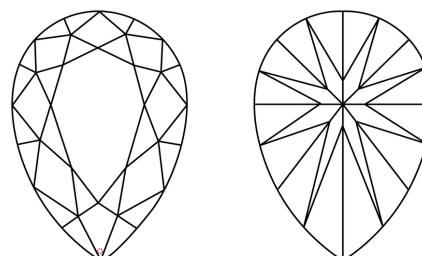


Sample Image Used

**PROPORTIONS**



**CLARITY CHARACTERISTICS**



**KEY TO SYMBOLS**

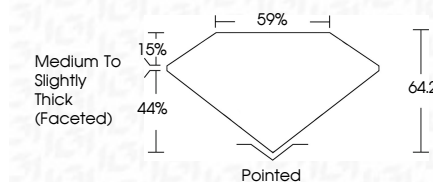
Red symbols indicate internal characteristics.  
Green symbols indicate external characteristics.

**COLOR**

D E F G H I J Faint Very Light Light

**CLARITY**

FL	IF	VS <sup>1-2</sup>	VS <sup>1-2</sup>	SI <sup>1-2</sup>	I <sup>1-3</sup>
Flawless	Internally Flawless	Very Very Slightly Included	Very Slightly Included	Slightly Included	Included



**ADDITIONAL GRADING INFORMATION**

Polish **EXCELLENT**

Symmetry **EXCELLENT**

Fluorescence **NONE**

Inscription(s) **IGI LG793636104**

Comments: This Laboratory Grown Diamond was created by Chemical Vapor Deposition (CVD) growth process. Type IIa



**IGI**



April 22, 2026	1.01 CARAT	E	VVS 2	64.2%	59%	Pointed	EXCELLENT	EXCELLENT	NONE	IGI LG793636104
IGI Report No LG793636104	8.45 X 5.62 X 3.61 MM	Color Grade	Depth	Table	Girdle	Medium to Slightly Thick (Faceted)	Culet	Polish	Symmetry	Fluorescence
PEAR BRILLIANT										

Comments: This Laboratory Grown Diamond was created by Chemical Vapor Deposition (CVD) growth process. Type IIa