



**ELECTRONIC COPY**

LG793638148  
Report verification at igi.org



April 20, 2026

IGI Report Number **LG793638148**

Description **LABORATORY GROWN DIAMOND**

Shape and Cutting Style **ROUND BRILLIANT**

Measurements **7.43 - 7.46 X 4.48 MM**

**GRADING RESULTS**

Carat Weight **1.52 CARAT**

Color Grade **E**

Clarity Grade **VVS 2**

Cut Grade **IDEAL**

April 20, 2026

IGI Report Number **LG793638148**

Description **LABORATORY GROWN DIAMOND**

Shape and Cutting Style **ROUND BRILLIANT**

Measurements **7.43 - 7.46 X 4.48 MM**

**GRADING RESULTS**

Carat Weight **1.52 CARAT**

Color Grade **E**

Clarity Grade **VVS 2**

Cut Grade **IDEAL**

**ADDITIONAL GRADING INFORMATION**

Polish **EXCELLENT**

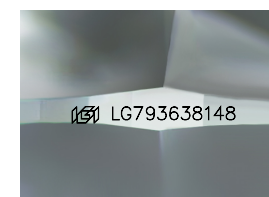
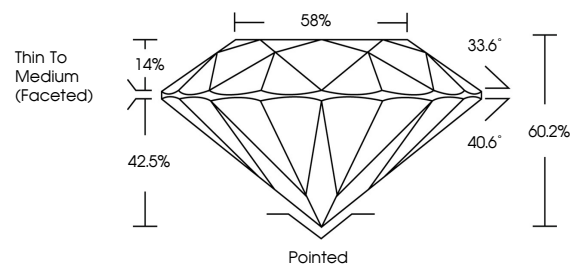
Symmetry **EXCELLENT**

Fluorescence **NONE**

Inscription(s) **IGI LG793638148**

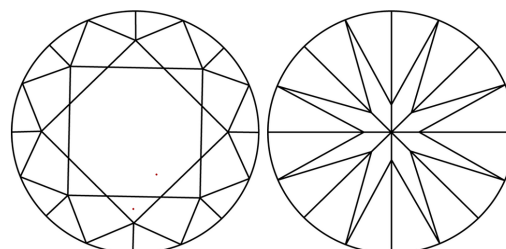
Comments: This Laboratory Grown Diamond was created by Chemical Vapor Deposition (CVD) growth process.  
Type IIa

**PROPORTIONS**



Sample Image Used

**CLARITY CHARACTERISTICS**



**KEY TO SYMBOLS**

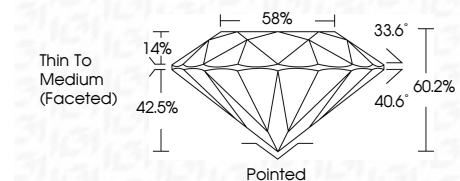
Red symbols indicate internal characteristics.  
Green symbols indicate external characteristics.

**COLOR**

D E F G H I J Faint Very Light Light

**CLARITY**

FL	IF	VVS <sup>1-2</sup>	VS <sup>1-2</sup>	SI <sup>1-2</sup>	I <sup>1-3</sup>
Flawless	Internally Flawless	Very Very Slightly Included	Very Slightly Included	Slightly Included	Included



**ADDITIONAL GRADING INFORMATION**

Polish **EXCELLENT**

Symmetry **EXCELLENT**

Fluorescence **NONE**

Inscription(s) **IGI LG793638148**

Comments: This Laboratory Grown Diamond was created by Chemical Vapor Deposition (CVD) growth process.  
Type IIa



**IGI**



April 20, 2026	IGI Report No LG793638148	1.52 CARAT	E	Pointed	EXCELLENT	EXCELLENT	NONE	IGI LG793638148
ROUND BRILLIANT	7.43 - 7.46 X 4.48 MM	Color Grade	VVS 2	Depth	IDEAL	60.2%	58%	Thin To Medium (Faceted)
		Clarity Grade	VVS 2	Cut Grade	IDEAL	60.2%	58%	Pointed
		Table	58%	Grille	None	None	None	EXCELLENT
		Culet	None	Polish	EXCELLENT	Symmetry	EXCELLENT	EXCELLENT
		Fluorescence	None	Inscription(s)	IGI LG793638148			

Comments: This Laboratory Grown Diamond was created by Chemical Vapor Deposition (CVD) growth process.  
Type IIa