



ELECTRONIC COPY

LG793642075
Report verification at igi.org



May 1, 2026

IGI Report Number LG793642075

Description LABORATORY GROWN DIAMOND

Shape and Cutting Style EMERALD CUT

Measurements 9.78 X 6.95 X 4.66 MM

GRADING RESULTS

Carat Weight 3.10 CARATS

Color Grade F

Clarity Grade VS 1

May 1, 2026

IGI Report Number LG793642075

Description LABORATORY GROWN DIAMOND

Shape and Cutting Style EMERALD CUT

Measurements 9.78 X 6.95 X 4.66 MM

GRADING RESULTS

Carat Weight 3.10 CARATS

Color Grade F

Clarity Grade VS 1

ADDITIONAL GRADING INFORMATION

Polish EXCELLENT

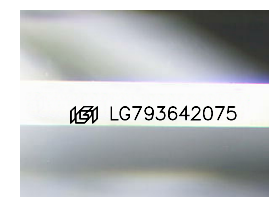
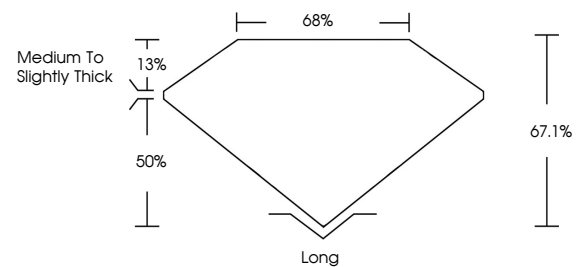
Symmetry EXCELLENT

Fluorescence NONE

Inscription(s) IGI LG793642075

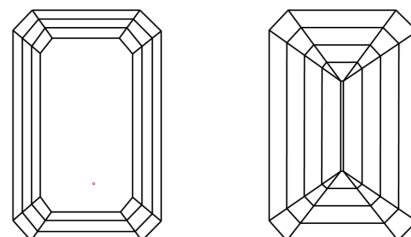
Comments: This Laboratory Grown Diamond was created by Chemical Vapor Deposition (CVD) growth process. Type IIa

PROPORTIONS



Sample Image Used

CLARITY CHARACTERISTICS



KEY TO SYMBOLS

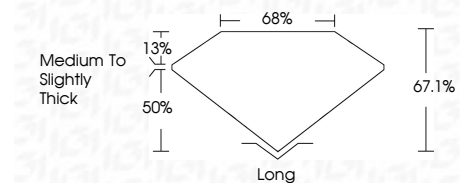
Red symbols indicate internal characteristics. Green symbols indicate external characteristics.

COLOR

D E F G H I J Faint Very Light Light

CLARITY

Table with columns for clarity grades: FL, IF, VS 1-2, VS 1-2, SI 1-2, I 1-3 and corresponding descriptions: Flawless, Internally Flawless, Very Very Slightly Included, Very Slightly Included, Slightly Included, Included.



ADDITIONAL GRADING INFORMATION

Polish EXCELLENT

Symmetry EXCELLENT

Fluorescence NONE

Inscription(s) IGI LG793642075

Comments: This Laboratory Grown Diamond was created by Chemical Vapor Deposition (CVD) growth process. Type IIa



IGI



Summary of report details including date, report number, description, measurements, grading results, and additional information.

Comments: This Laboratory Grown Diamond was created by Chemical Vapor Deposition (CVD) growth process. Type IIa