



ELECTRONIC COPY

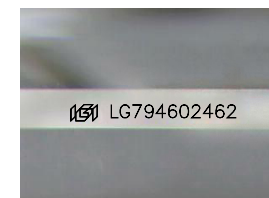
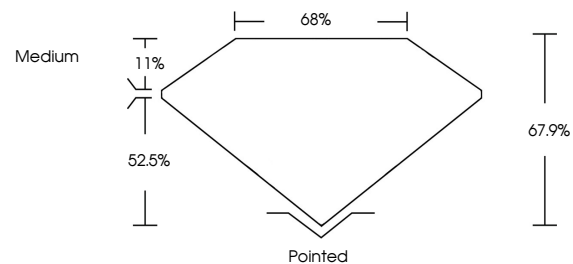
LG794602462
Report verification at igi.org



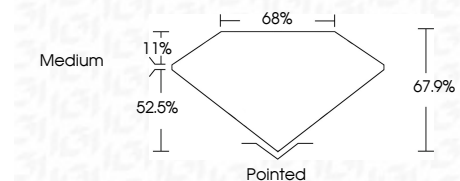
May 8, 2026
IGI Report Number LG794602462
Description LABORATORY GROWN DIAMOND
Shape and Cutting Style CUT CORNERED RECTANGULAR MODIFIED BRILLIANT
Measurements 10.21 X 7.22 X 4.90 MM
GRADING RESULTS
Carat Weight 3.06 CARATS
Color Grade F
Clarity Grade VVS 2

May 8, 2026
IGI Report Number LG794602462
Description LABORATORY GROWN DIAMOND
Shape and Cutting Style CUT CORNERED RECTANGULAR MODIFIED BRILLIANT
Measurements 10.21 X 7.22 X 4.90 MM

PROPORTIONS



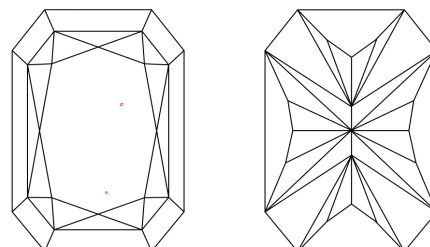
Sample Image Used



GRADING RESULTS

Carat Weight 3.06 CARATS
Color Grade F
Clarity Grade VVS 2

CLARITY CHARACTERISTICS



KEY TO SYMBOLS

Red symbols indicate internal characteristics.
Green symbols indicate external characteristics.

ADDITIONAL GRADING INFORMATION

Polish EXCELLENT
Symmetry EXCELLENT
Fluorescence NONE
Inscription(s) LG794602462

Comments: This Laboratory Grown Diamond was created by Chemical Vapor Deposition (CVD) growth process. Type IIa

COLOR

D E F G H I J Faint Very Light Light

CLARITY

FL IF VVS 1-2 VS 1-2 SI 1-2 I 1-3
Flawless Internally Flawless Very Very Slightly Included Very Slightly Included Slightly Included Included

ADDITIONAL GRADING INFORMATION

Polish EXCELLENT
Symmetry EXCELLENT
Fluorescence NONE
Inscription(s) LG794602462
Comments: This Laboratory Grown Diamond was created by Chemical Vapor Deposition (CVD) growth process. Type IIa



May 8, 2026
IGI Report No LG794602462
CUT CORNERED RECT. MODIFIED BRILLIANT
10.21 X 7.22 X 4.90 MM
3.06 CARATS
F
VVS 2
67.9%
68%
Medium
Pointed
EXCELLENT
EXCELLENT
NONE
IGI LG794602462
Comments: This Laboratory Grown Diamond was created by Chemical Vapor Deposition (CVD) growth process. Type IIa