



ELECTRONIC COPY

LG794602802
Report verification at igi.org



May 9, 2026
IGI Report Number **LG794602802**
Description **LABORATORY GROWN DIAMOND**
Shape and Cutting Style **ROUND BRILLIANT**
Measurements **8.36 - 8.39 X 5.29 MM**
GRADING RESULTS
Carat Weight **2.30 CARATS**
Color Grade **FANCY VIVID PINK**
Clarity Grade **VS 2**
Cut Grade **EXCELLENT**

May 9, 2026
IGI Report Number **LG794602802**
Description **LABORATORY GROWN DIAMOND**
Shape and Cutting Style **ROUND BRILLIANT**
Measurements **8.36 - 8.39 X 5.29 MM**

GRADING RESULTS

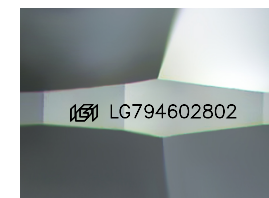
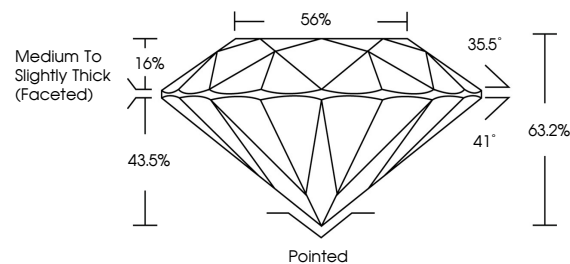
Carat Weight **2.30 CARATS**
Color Grade **FANCY VIVID PINK**
Clarity Grade **VS 2**
Cut Grade **EXCELLENT**

ADDITIONAL GRADING INFORMATION

Polish **EXCELLENT**
Symmetry **EXCELLENT**
Fluorescence **SLIGHT**
Inscription(s) **IGI LG794602802**

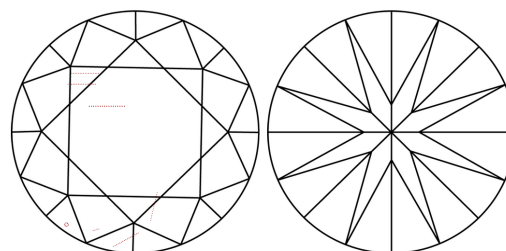
Comments: This Laboratory Grown Diamond was created by Chemical Vapor Deposition (CVD) growth process.
Indications of post-growth treatment.

PROPORTIONS



Sample Image Used

CLARITY CHARACTERISTICS



KEY TO SYMBOLS

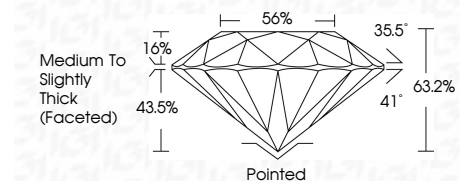
Red symbols indicate internal characteristics.
Green symbols indicate external characteristics.

COLOR

D E F G H I J Faint Very Light Light

CLARITY

FL	IF	VS ¹⁻²	VS ¹⁻²	SI ¹⁻²	I ¹⁻³
Flawless	Internally Flawless	Very Very Slightly Included	Very Slightly Included	Slightly Included	Included



ADDITIONAL GRADING INFORMATION

Polish **EXCELLENT**
Symmetry **EXCELLENT**
Fluorescence **SLIGHT**
Inscription(s) **IGI LG794602802**
Comments: This Laboratory Grown Diamond was created by Chemical Vapor Deposition (CVD) growth process.
Indications of post-growth treatment.



May 9, 2026
IGI Report No LG794602802
ROUND BRILLIANT
2.30 CARATS
Carat Weight **2.30 CARATS**
Color Grade **FANCY VIVID PINK**
Clarity Grade **VS 2**
Depth **EXCELLENT**
Table **63.2%**
Girdle **56%**
Medium To Slightly Thick (Faceted)
Culet **Pointed**
Polish **EXCELLENT**
Symmetry **EXCELLENT**
Fluorescence **SLIGHT**
Inscriptions(s) **IGI LG794602802**
Comments: This Laboratory Grown Diamond was created by Chemical Vapor Deposition (CVD) growth process.
Indications of post-growth treatment.