



ELECTRONIC COPY

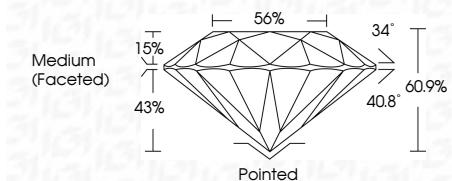
LG794604480
Report verification at igi.org



May 22, 2026
IGI Report Number **LG794604480**
Description **LABORATORY GROWN DIAMOND**
Shape and Cutting Style **ROUND BRILLIANT**
Measurements **7.55 - 7.59 X 4.61 MM**

GRADING RESULTS

Carat Weight **1.61 CARAT**
Color Grade **D**
Clarity Grade **VVS 2**
Cut Grade **IDEAL**

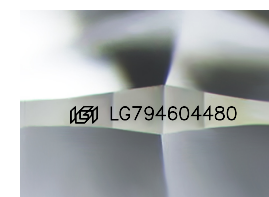


ADDITIONAL GRADING INFORMATION

Polish **EXCELLENT**
Symmetry **EXCELLENT**
Fluorescence **NONE**
Inscription(s) **IGI LG794604480**
Comments: HEARTS & ARROWS
This Laboratory Grown Diamond was created by Chemical Vapor Deposition (CVD) growth process. Type IIa

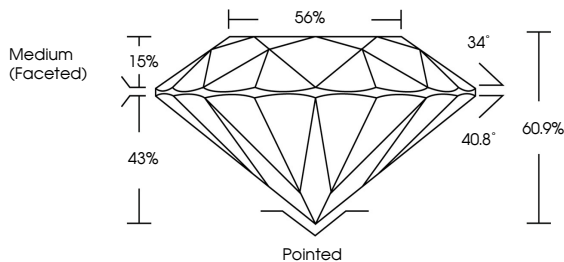


May 22, 2026	IGI Report No LG794604480	1.61 CARAT	D	VVS 2	IDEAL	60.9%	56%	Medium (Faceted)	Pointed	EXCELLENT	EXCELLENT	NONE	IGI LG794604480
Carat Weight		Color Grade		Clarity Grade		Depth		Table		Culet		Polish	
Color Grade		Clarity Grade		Depth		Table		Culet		Symmetry		Fluorescence	
Clarity Grade		Depth		Table		Culet		Symmetry		Fluorescence		Inscriptions(s)	
Depth		Table		Culet		Symmetry		Fluorescence		Inscriptions(s)		Comments:	
Table		Culet		Symmetry		Fluorescence		Inscriptions(s)		Comments:		Hearts & Arrows	
Culet		Symmetry		Fluorescence		Inscriptions(s)		Comments:		Hearts & Arrows		This Laboratory Grown Diamond was created by Chemical Vapor Deposition (CVD) growth process.	
Symmetry		Fluorescence		Inscriptions(s)		Comments:		Hearts & Arrows		This Laboratory Grown Diamond was created by Chemical Vapor Deposition (CVD) growth process.		Type IIa	
Fluorescence		Inscriptions(s)		Comments:		Hearts & Arrows		This Laboratory Grown Diamond was created by Chemical Vapor Deposition (CVD) growth process.		Type IIa			
Inscriptions(s)		Comments:		Hearts & Arrows		This Laboratory Grown Diamond was created by Chemical Vapor Deposition (CVD) growth process.		Type IIa					

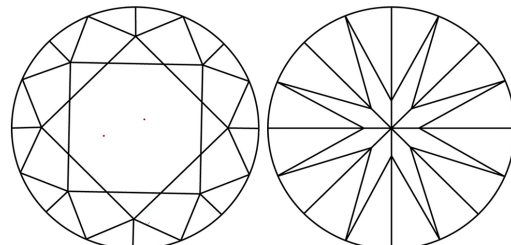


Sample Image Used

PROPORTIONS



CLARITY CHARACTERISTICS



KEY TO SYMBOLS

Red symbols indicate internal characteristics.
Green symbols indicate external characteristics.



COLOR

D	E	F	G	H	I	J	Faint	Very Light	Light
---	---	---	---	---	---	---	-------	------------	-------

CLARITY

FL	IF	VVS ¹⁻²	VS ¹⁻²	SI ¹⁻²	I ¹⁻³
Flawless	Internally Flawless	Very Very Slightly Included	Very Slightly Included	Slightly Included	Included

