



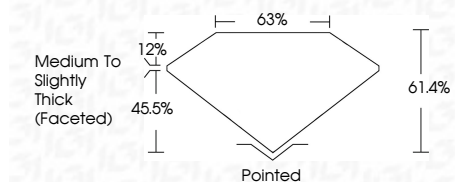
**ELECTRONIC COPY**

LG794608592  
Report verification at igi.org



May 4, 2026  
IGI Report Number **LG794608592**  
Description **LABORATORY GROWN DIAMOND**  
Shape and Cutting Style **PEAR BRILLIANT**  
Measurements **8.55 X 5.81 X 3.57 MM**

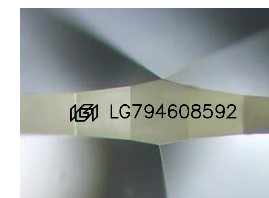
**GRADING RESULTS**  
Carat Weight **1.01 CARAT**  
Color Grade **E**  
Clarity Grade **VS 1**



**ADDITIONAL GRADING INFORMATION**  
Polish **VERY GOOD**  
Symmetry **VERY GOOD**  
Fluorescence **NONE**  
Inscription(s) **IGI LG794608592**  
Comments: This Laboratory Grown Diamond was created by Chemical Vapor Deposition (CVD) growth process. Type IIa

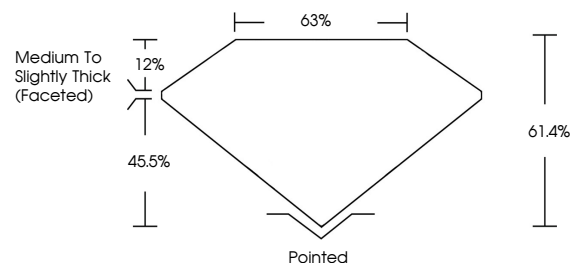


May 4, 2026  
IGI Report No LG794608592  
**PEAR BRILLIANT**  
8.55 X 5.81 X 3.57 MM  
1.01 CARAT  
E  
Color Grade  
VS 1  
61.4%  
45.5%  
12%  
Medium to Slightly Thick (Faceted)  
Pointed  
Polish  
VERY GOOD  
Symmetry  
VERY GOOD  
Fluorescence  
NONE  
Inscription(s)  
IGI LG794608592  
Comments: This Laboratory Grown Diamond was created by Chemical Vapor Deposition (CVD) growth process. Type IIa

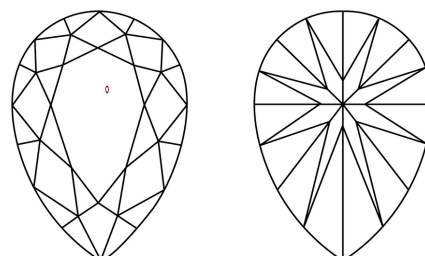


Sample Image Used

**PROPORTIONS**



**CLARITY CHARACTERISTICS**



**KEY TO SYMBOLS**

Red symbols indicate internal characteristics.  
Green symbols indicate external characteristics.

**COLOR**

D E F G H I J Faint Very Light Light

**CLARITY**

FL	IF	VS <sup>1-2</sup>	VS <sup>1-2</sup>	SI <sup>1-2</sup>	I <sup>1-3</sup>
Flawless	Internally Flawless	Very Very Slightly Included	Very Slightly Included	Slightly Included	Included

