



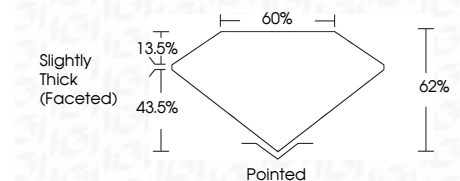
ELECTRONIC COPY

LG794609499
Report verification at igi.org



May 7, 2026
IGI Report Number LG794609499
Description LABORATORY GROWN DIAMOND
Shape and Cutting Style MARQUISE BRILLIANT
Measurements 13.78 X 6.74 X 4.18 MM

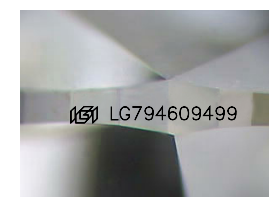
GRADING RESULTS
Carat Weight 2.26 CARATS
Color Grade E
Clarity Grade VS 1



ADDITIONAL GRADING INFORMATION
Polish EXCELLENT
Symmetry EXCELLENT
Fluorescence NONE
Inscription(s) IGI LG794609499
Comments: This Laboratory Grown Diamond was created by Chemical Vapor Deposition (CVD) growth process. Type IIa

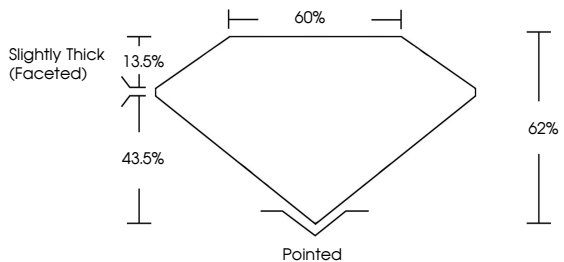


May 7, 2026
IGI Report No LG794609499
MARQUISE BRILLIANT
13.78 X 6.74 X 4.18 MM
2.26 CARATS E
Color Grade VS 1
Depth 62%
Table 60%
Girdle Slightly Thick (Faceted)
Pointed
Polish EXCELLENT
Symmetry EXCELLENT
Fluorescence NONE
Inscription(s) IGI LG794609499
Comments: This Laboratory Grown Diamond was created by Chemical Vapor Deposition (CVD) growth process. Type IIa

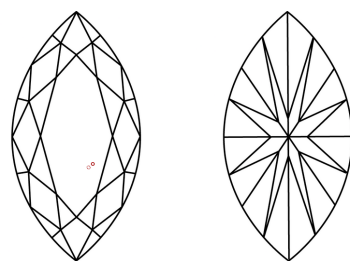


Sample Image Used

PROPORTIONS



CLARITY CHARACTERISTICS



KEY TO SYMBOLS
Red symbols indicate internal characteristics.
Green symbols indicate external characteristics.

COLOR

Table with color grades: D, E, F, G, H, I, J, Faint, Very Light, Light

CLARITY

Table with clarity grades: FL, IF, VS 1-2, VS 1-2, SI 1-2, I 1-3, Flawless, Internally Flawless, Very Very Slightly Included, Very Slightly Included, Slightly Included, Included

