



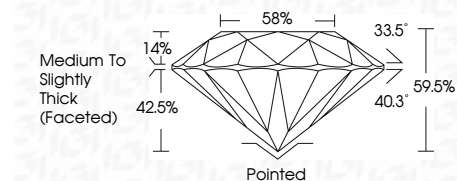
ELECTRONIC COPY

LG794610214 Report verification at igi.org



May 14, 2026 IGI Report Number LG794610214 Description LABORATORY GROWN DIAMOND Shape and Cutting Style ROUND BRILLIANT Measurements 7.52 - 7.56 X 4.49 MM

GRADING RESULTS Carat Weight 1.55 CARAT Color Grade G Clarity Grade VVS 1 Cut Grade IDEAL



ADDITIONAL GRADING INFORMATION Polish EXCELLENT Symmetry EXCELLENT Fluorescence NONE Inscription(s) LG794610214 Comments: This Laboratory Grown Diamond was created by Chemical Vapor Deposition (CVD) growth process. Type IIa



May 14, 2026 IGI Report No LG794610214 ROUND BRILLIANT 7.52 - 7.56 X 4.49 MM 1.55 CARAT G VVS 1 IDEAL 59.5% 58% Medium To Slightly Thick (Faceted) Pointed EXCELLENT EXCELLENT NONE LG794610214 Comments: This Laboratory Grown Diamond was created by Chemical Vapor Deposition (CVD) growth process. Type IIa

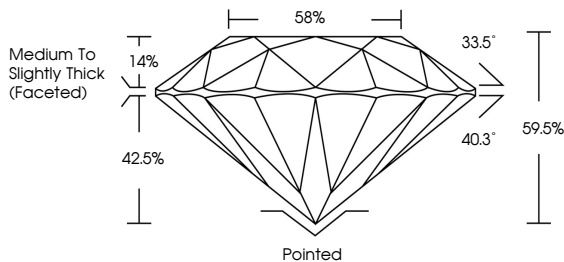
May 14, 2026 IGI Report Number LG794610214 Description LABORATORY GROWN DIAMOND Shape and Cutting Style ROUND BRILLIANT Measurements 7.52 - 7.56 X 4.49 MM

GRADING RESULTS Carat Weight 1.55 CARAT Color Grade G Clarity Grade VVS 1 Cut Grade IDEAL

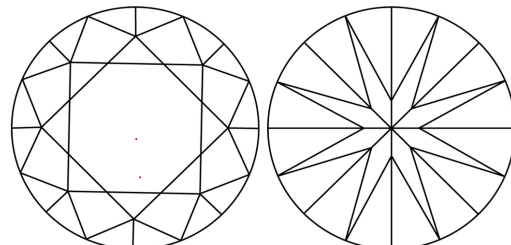
ADDITIONAL GRADING INFORMATION Polish EXCELLENT Symmetry EXCELLENT Fluorescence NONE Inscription(s) LG794610214

Comments: This Laboratory Grown Diamond was created by Chemical Vapor Deposition (CVD) growth process. Type IIa

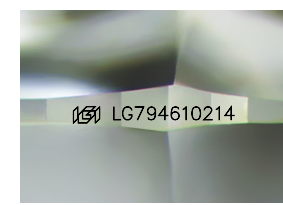
PROPORTIONS



CLARITY CHARACTERISTICS



KEY TO SYMBOLS Red symbols indicate internal characteristics. Green symbols indicate external characteristics.



Sample Image Used

COLOR

Color scale table with categories D, E, F, G, H, I, J, Faint, Very Light, Light

CLARITY

Clarity scale table with categories FL, IF, VS 1-2, VS 1-2, SI 1-2, I 1-3, Flawless, Internally Flawless, Very Very Slightly Included, Very Slightly Included, Slightly Included, Included

