



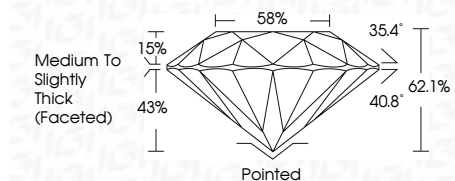
ELECTRONIC COPY

LG794613368 Report verification at igi.org



May 8, 2026 IGI Report Number LG794613368 Description LABORATORY GROWN DIAMOND Shape and Cutting Style ROUND BRILLIANT Measurements 9.18 - 9.26 X 5.72 MM

GRADING RESULTS Carat Weight 3.02 CARATS Color Grade F Clarity Grade VVS 2 Cut Grade IDEAL



ADDITIONAL GRADING INFORMATION Polish EXCELLENT Symmetry EXCELLENT Fluorescence NONE Inscription(s) IGI LG794613368 Comments: This Laboratory Grown Diamond was created by Chemical Vapor Deposition (CVD) growth process. Type IIa



May 8, 2026 IGI Report No LG794613368 ROUND BRILLIANT 9.18 - 9.26 X 5.72 MM 3.02 CARATS F Color Grade VVS 2 IDEAL Clarity Grade 62.1% Depth 58% Table Medium To Slightly Thick (Faceted) 15% Pointed EXCELLENT EXCELLENT NONE IGI LG794613368

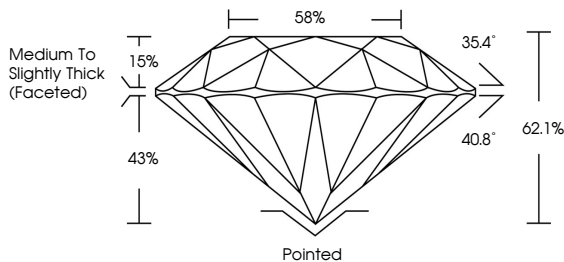
May 8, 2026 IGI Report Number LG794613368 Description LABORATORY GROWN DIAMOND Shape and Cutting Style ROUND BRILLIANT Measurements 9.18 - 9.26 X 5.72 MM

GRADING RESULTS Carat Weight 3.02 CARATS Color Grade F Clarity Grade VVS 2 Cut Grade IDEAL

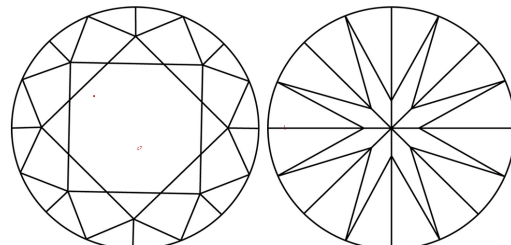
ADDITIONAL GRADING INFORMATION Polish EXCELLENT Symmetry EXCELLENT Fluorescence NONE Inscription(s) IGI LG794613368

Comments: This Laboratory Grown Diamond was created by Chemical Vapor Deposition (CVD) growth process. Type IIa

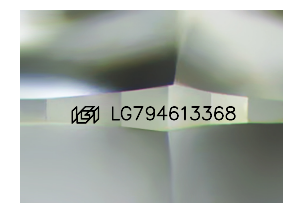
PROPORTIONS



CLARITY CHARACTERISTICS



KEY TO SYMBOLS Red symbols indicate internal characteristics. Green symbols indicate external characteristics.



Sample Image Used

COLOR

Color scale from D to J, with 'Faint', 'Very Light', and 'Light' labels.

CLARITY

Clarity scale from FL to I 1-3, with labels: Flawless, Internally Flawless, Very Very Slightly Included, Very Slightly Included, Slightly Included, Included.

