



ELECTRONIC COPY

LG794620416
Report verification at igi.org



May 7, 2026

IGI Report Number **LG794620416**

Description **LABORATORY GROWN DIAMOND**

Shape and Cutting Style **HEART BRILLIANT**

Measurements **10.80 X 12.08 X 6.83 MM**

GRADING RESULTS

Carat Weight **5.09 CARATS**

Color Grade **F**

Clarity Grade **VVS 2**

May 7, 2026

IGI Report Number **LG794620416**

Description **LABORATORY GROWN DIAMOND**

Shape and Cutting Style **HEART BRILLIANT**

Measurements **10.80 X 12.08 X 6.83 MM**

GRADING RESULTS

Carat Weight **5.09 CARATS**

Color Grade **F**

Clarity Grade **VVS 2**

ADDITIONAL GRADING INFORMATION

Polish **EXCELLENT**

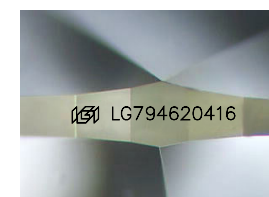
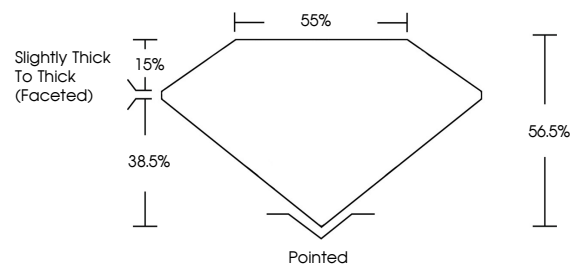
Symmetry **EXCELLENT**

Fluorescence **NONE**

Inscription(s) **IGI LG794620416**

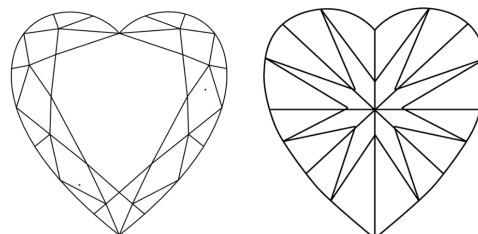
Comments: This Laboratory Grown Diamond was created by Chemical Vapor Deposition (CVD) growth process. Type IIa

PROPORTIONS



Sample Image Used

CLARITY CHARACTERISTICS



KEY TO SYMBOLS

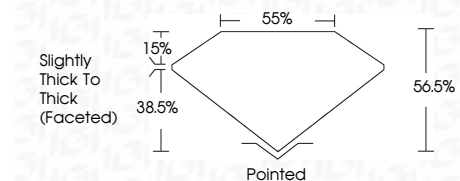
Red symbols indicate internal characteristics.
Green symbols indicate external characteristics.

COLOR

D E F G H I J Faint Very Light Light

CLARITY

FL	IF	VVS ¹⁻²	VS ¹⁻²	SI ¹⁻²	I ¹⁻³
Flawless	Internally Flawless	Very Very Slightly Included	Very Slightly Included	Slightly Included	Included



ADDITIONAL GRADING INFORMATION

Polish **EXCELLENT**

Symmetry **EXCELLENT**

Fluorescence **NONE**

Inscription(s) **IGI LG794620416**

Comments: This Laboratory Grown Diamond was created by Chemical Vapor Deposition (CVD) growth process. Type IIa



IGI



May 7, 2026
IGI Report No LG794620416
HEART BRILLIANT

5.09 CARATS
Carat Weight
Color Grade **F**
Clarity Grade **VVS 2**
Depth **56.5%**
Table **38.5%**
Girdle **Slightly Thick To Thick (Faceted)**

Pointed
Culet
Polish **EXCELLENT**
Symmetry **EXCELLENT**
Fluorescence **NONE**
Inscription(s) **IGI LG794620416**

Comments: This Laboratory Grown Diamond was created by Chemical Vapor Deposition (CVD) growth process. Type IIa