



ELECTRONIC COPY

LG794620745
Report verification at igi.org



May 7, 2026
IGI Report Number LG794620745
Description LABORATORY GROWN DIAMOND
Shape and Cutting Style SQUARE CUSHION MODIFIED BRILLIANT
Measurements 6.53 X 6.46 X 4.34 MM
GRADING RESULTS
Carat Weight 1.51 CARAT
Color Grade D
Clarity Grade FLAWLESS

LABORATORY GROWN DIAMOND REPORT

May 7, 2026
IGI Report Number LG794620745
Description LABORATORY GROWN DIAMOND
Shape and Cutting Style SQUARE CUSHION MODIFIED BRILLIANT
Measurements 6.53 X 6.46 X 4.34 MM

GRADING RESULTS

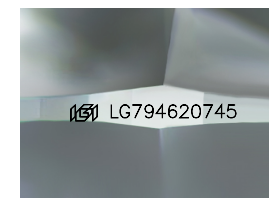
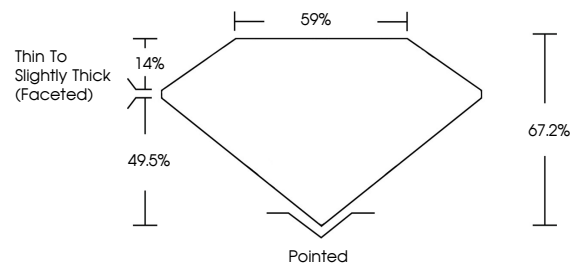
Carat Weight 1.51 CARAT
Color Grade D
Clarity Grade FLAWLESS

ADDITIONAL GRADING INFORMATION

Polish EXCELLENT
Symmetry EXCELLENT
Fluorescence NONE
Inscription(s) IGI LG794620745

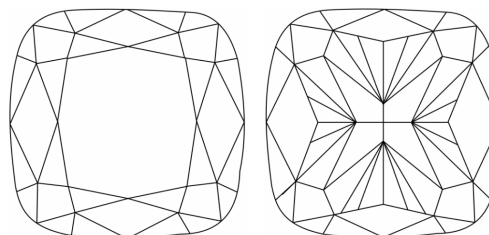
Comments: As Grown - No indication of post-growth treatment.
This Laboratory Grown Diamond was created by High Pressure High Temperature (HPHT) growth process.
Type II

PROPORTIONS



Sample Image Used

CLARITY CHARACTERISTICS



KEY TO SYMBOLS

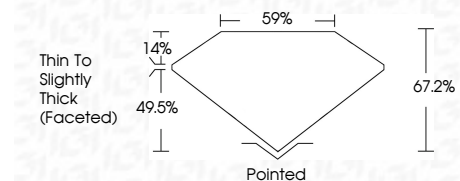
Red symbols indicate internal characteristics.
Green symbols indicate external characteristics.

COLOR

D E F G H I J Faint Very Light Light

CLARITY

FL IF VS 1-2 VS 1-2 SI 1-2 I 1-3
Flawless Internally Flawless Very Very Slightly Included Very Slightly Included Slightly Included Included



ADDITIONAL GRADING INFORMATION

Polish EXCELLENT
Symmetry EXCELLENT
Fluorescence NONE
Inscription(s) IGI LG794620745
Comments: As Grown - No indication of post-growth treatment.
This Laboratory Grown Diamond was created by High Pressure High Temperature (HPHT) growth process.
Type II



May 7, 2026
IGI Report No LG794620745
SQUARE CUSHION MODIFIED BRILLIANT
1.51 CARAT D
FLAWLESS
6.53 X 6.46 X 4.34 MM
67.2% 59%
Thin to Slightly Thick (Faceted)
Pointed
EXCELLENT EXCELLENT NONE
None (LG794620745)
Comments: As Grown - No indication of post-growth treatment.
This Laboratory Grown Diamond was created by High Pressure High Temperature (HPHT) growth process.
Type II