



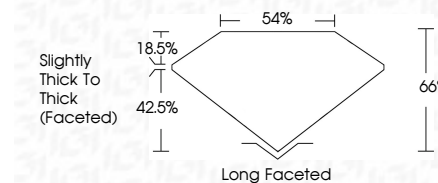
**ELECTRONIC COPY**

LG794626823  
Report verification at igi.org



June 3, 2026  
IGI Report Number **LG794626823**  
Description **LABORATORY GROWN DIAMOND**  
Shape and Cutting Style **ANTIQUÉ CUSHION CUT**  
Measurements **10.03 X 7.65 X 5.05 MM**

**GRADING RESULTS**  
Carat Weight **3.06 CARATS**  
Color Grade **D**  
Clarity Grade **VVS 2**



**ADDITIONAL GRADING INFORMATION**  
Polish **EXCELLENT**  
Symmetry **EXCELLENT**  
Fluorescence **NONE**  
Inscription(s) **IGI LG794626823**  
Comments: This Laboratory Grown Diamond was created by Chemical Vapor Deposition (CVD) growth process. Type IIa



June 3, 2026  
IGI Report No LG794626823  
**ANTIQUÉ CUSHION CUT**  
10.03 X 7.65 X 5.05 MM  
3.06 CARATS  
D  
VVS 2  
66%  
54%  
Slightly Thick To Thick (Faceted)  
Long Faceted  
EXCELLENT  
EXCELLENT  
NONE  
IGI LG794626823  
Comments: This Laboratory Grown Diamond was created by Chemical Vapor Deposition (CVD) growth process. Type IIa

**LABORATORY GROWN DIAMOND REPORT**

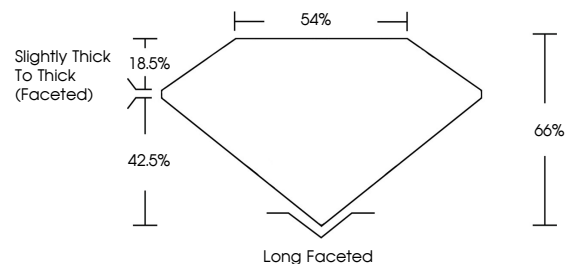
June 3, 2026  
IGI Report Number **LG794626823**  
Description **LABORATORY GROWN DIAMOND**  
Shape and Cutting Style **ANTIQUÉ CUSHION CUT**  
Measurements **10.03 X 7.65 X 5.05 MM**

**GRADING RESULTS**  
Carat Weight **3.06 CARATS**  
Color Grade **D**  
Clarity Grade **VVS 2**

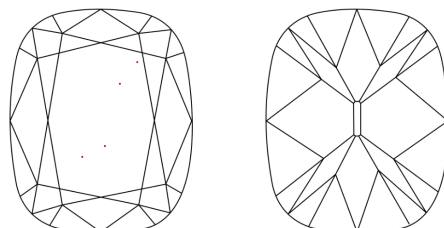
**ADDITIONAL GRADING INFORMATION**  
Polish **EXCELLENT**  
Symmetry **EXCELLENT**  
Fluorescence **NONE**  
Inscription(s) **IGI LG794626823**

Comments: This Laboratory Grown Diamond was created by Chemical Vapor Deposition (CVD) growth process. Type IIa

**PROPORTIONS**

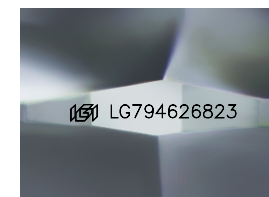


**CLARITY CHARACTERISTICS**



**KEY TO SYMBOLS**

Red symbols indicate internal characteristics.  
Green symbols indicate external characteristics.



Sample Image Used

**COLOR**

D E F G H I J Faint Very Light Light

**CLARITY**

FL	IF	VVS <sup>1-2</sup>	VS <sup>1-2</sup>	SI <sup>1-2</sup>	I <sup>1-3</sup>
Flawless	Internally Flawless	Very Very Slightly Included	Very Slightly Included	Slightly Included	Included

