



**INTERNATIONAL  
GEMOLOGICAL  
INSTITUTE**

**LABORATORY GROWN DIAMOND REPORT**

May 7, 2026  
 IGI Report Number **LG794630336**  
 Description **LABORATORY GROWN DIAMOND**  
 Shape and Cutting Style **ROUND BRILLIANT**  
 Measurements **4.68 - 4.71 X 2.95 MM**

**GRADING RESULTS**

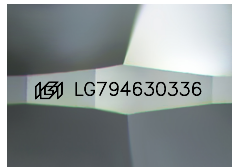
Carat Weight **0.40 CARAT**  
 Color Grade **D**  
 Clarity Grade **VVS 2**  
 Cut Grade **EXCELLENT**

**ADDITIONAL GRADING INFORMATION**

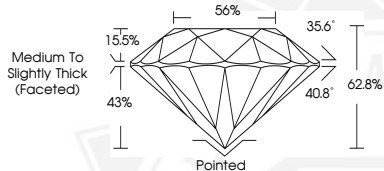
Polish **EXCELLENT**  
 Symmetry **EXCELLENT**  
 Fluorescence **NONE**  
 Inscription(s) **IGI LG794630336**

Comments: As Grown - No indication of post-growth treatment. This Laboratory Grown Diamond was created by High Pressure High Temperature (HPHT) growth process. Type II

**ELECTRONIC COPY**



Sample Image Used



May 7, 2026  
 IGI Report Number **LG794630336**  
 ROUND BRILLIANT  
 LABORATORY GROWN DIAMOND  
 4.68 - 4.71 X 2.95 MM  
 0.40 CARAT  
 D  
 VVS 2  
 EXCELLENT  
 EXCELLENT  
 EXCELLENT  
 NONE  
 IGI LG794630336

Comments: As Grown - No indication of post-growth treatment. This Laboratory Grown Diamond was created by High Pressure High Temperature (HPHT) growth process. Type II



May 7, 2026  
 IGI Report Number **LG794630336**  
 ROUND BRILLIANT  
 LABORATORY GROWN DIAMOND  
 4.68 - 4.71 X 2.95 MM  
 0.40 CARAT  
 D  
 VVS 2  
 EXCELLENT  
 EXCELLENT  
 EXCELLENT  
 NONE  
 IGI LG794630336

Comments: As Grown - No indication of post-growth treatment. This Laboratory Grown Diamond was created by High Pressure High Temperature (HPHT) growth process. Type II

THIS DOCUMENT WAS PRODUCED WITH THE FOLLOWING SECURITY MEASURES: SPECIAL DOCUMENT PAPER, INK SCREENS, WATERMARK, BACKGROUND DESIGNS, HOLOGRAM AND OTHER SECURITY FEATURES NOT LISTED AND DO EXCEED DOCUMENT SECURITY INDUSTRY GUIDELINES.

For terms & conditions and to verify this report, please visit [www.igi.org](http://www.igi.org)