



ELECTRONIC COPY

LG794631110
Report verification at igi.org



May 14, 2026
IGI Report Number **LG794631110**
Description **LABORATORY GROWN DIAMOND**
Shape and Cutting Style **EMERALD CUT**
Measurements **14.23 X 9.62 X 6.30 MM**
GRADING RESULTS
Carat Weight **8.59 CARATS**
Color Grade **FANCY INTENSE PINK**
Clarity Grade **VVS 2**

May 14, 2026
IGI Report Number **LG794631110**
Description **LABORATORY GROWN DIAMOND**
Shape and Cutting Style **EMERALD CUT**
Measurements **14.23 X 9.62 X 6.30 MM**

GRADING RESULTS

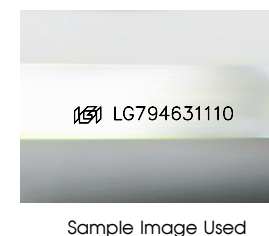
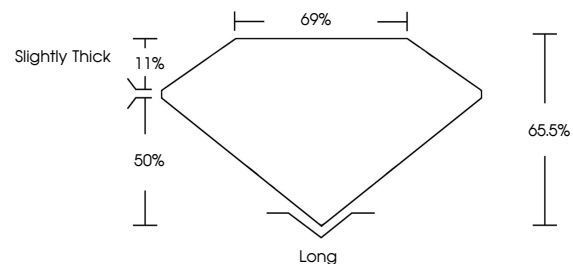
Carat Weight **8.59 CARATS**
Color Grade **FANCY INTENSE PINK**
Clarity Grade **VVS 2**

ADDITIONAL GRADING INFORMATION

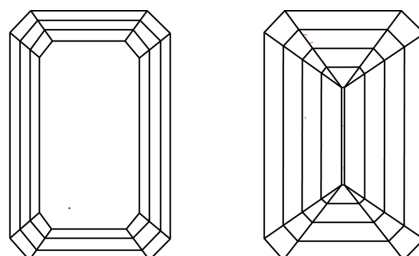
Polish **EXCELLENT**
Symmetry **EXCELLENT**
Fluorescence **STRONG**
Inscription(s) **IGI LG794631110**

Comments: This Laboratory Grown Diamond was created by Chemical Vapor Deposition (CVD) growth process.
Indications of post-growth treatment.

PROPORTIONS



CLARITY CHARACTERISTICS



KEY TO SYMBOLS

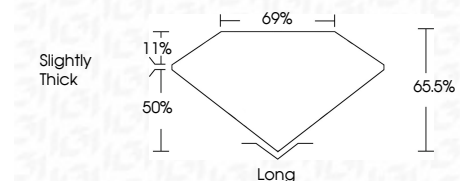
Red symbols indicate internal characteristics.
Green symbols indicate external characteristics.

COLOR

D E F G H I J Faint Very Light Light

CLARITY

FL	IF	VVS ¹⁻²	VS ¹⁻²	SI ¹⁻²	I ¹⁻³
Flawless	Internally Flawless	Very Very Slightly Included	Very Slightly Included	Slightly Included	Included



ADDITIONAL GRADING INFORMATION

Polish **EXCELLENT**
Symmetry **EXCELLENT**
Fluorescence **STRONG**
Inscription(s) **IGI LG794631110**
Comments: This Laboratory Grown Diamond was created by Chemical Vapor Deposition (CVD) growth process.
Indications of post-growth treatment.



May 14, 2026
IGI Report No LG794631110
EMERALD CUT
14.23 X 9.62 X 6.30 MM
8.59 CARATS
FANCY INTENSE PINK
VVS 2
65.5%
69%
Slightly Thick
Long
EXCELLENT
EXCELLENT
STRONG
IGI LG794631110
Comments: This Laboratory Grown Diamond was created by Chemical Vapor Deposition (CVD) growth process.
Indications of post-growth treatment.