



ELECTRONIC COPY

LG794634322
Report verification at igi.org



May 5, 2026

IGI Report Number **LG794634322**

Description **LABORATORY GROWN DIAMOND**

Shape and Cutting Style **OVAL BRILLIANT**

Measurements **8.16 X 5.52 X 3.45 MM**

GRADING RESULTS

Carat Weight **1.03 CARAT**

Color Grade **FANCY VIVID BLUE**

Clarity Grade **VVS 2**

May 5, 2026
IGI Report Number **LG794634322**
Description **LABORATORY GROWN DIAMOND**
Shape and Cutting Style **OVAL BRILLIANT**
Measurements **8.16 X 5.52 X 3.45 MM**

GRADING RESULTS

Carat Weight **1.03 CARAT**

Color Grade **FANCY VIVID BLUE**

Clarity Grade **VVS 2**

ADDITIONAL GRADING INFORMATION

Polish **EXCELLENT**

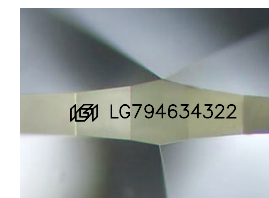
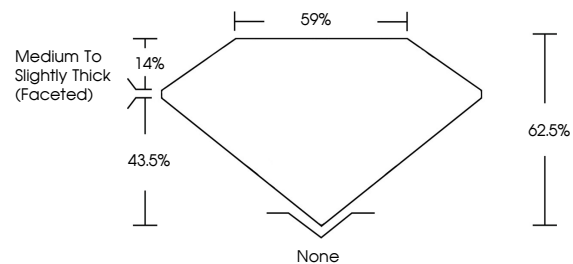
Symmetry **EXCELLENT**

Fluorescence **NONE**

Inscription(s) **IGI LG794634322**

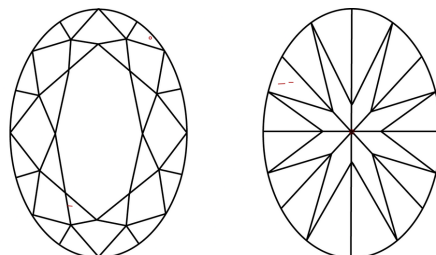
Comments: This Laboratory Grown Diamond was created by Chemical Vapor Deposition (CVD) growth process.
Indications of post-growth treatment.

PROPORTIONS



Sample Image Used

CLARITY CHARACTERISTICS



KEY TO SYMBOLS

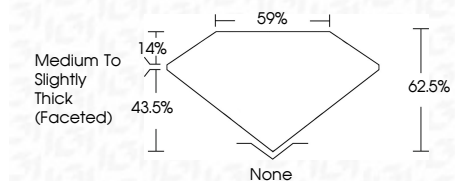
Red symbols indicate internal characteristics.
Green symbols indicate external characteristics.

COLOR

D E F G H I J Faint Very Light Light

CLARITY

FL	IF	VVS ¹⁻²	VS ¹⁻²	SI ¹⁻²	I ¹⁻³
Flawless	Internally Flawless	Very Very Slightly Included	Very Slightly Included	Slightly Included	Included



ADDITIONAL GRADING INFORMATION

Polish **EXCELLENT**

Symmetry **EXCELLENT**

Fluorescence **NONE**

Inscription(s) **IGI LG794634322**

Comments: This Laboratory Grown Diamond was created by Chemical Vapor Deposition (CVD) growth process.
Indications of post-growth treatment.



May 5, 2026
IGI Report No LG794634322
OVAL BRILLIANT
1.03 CARAT
8.16 X 5.52 X 3.45 MM
FANCY VIVID BLUE
VVS 2
62.5%
59%
Medium to Slightly Thick (Faceted)
None
EXCELLENT
EXCELLENT
NONE
IGI LG794634322

Comments: This Laboratory Grown Diamond was created by Chemical Vapor Deposition (CVD) growth process.
Indications of post-growth treatment.