



ELECTRONIC COPY

LG794636144
Report verification at igi.org



May 7, 2026

IGI Report Number **LG794636144**

Description **LABORATORY GROWN DIAMOND**

Shape and Cutting Style **ROUND BRILLIANT**

Measurements **8.21 - 8.25 X 5.02 MM**

GRADING RESULTS

Carat Weight **2.09 CARATS**

Color Grade **E**

Clarity Grade **VVS 2**

Cut Grade **IDEAL**

May 7, 2026

IGI Report Number **LG794636144**

Description **LABORATORY GROWN DIAMOND**

Shape and Cutting Style **ROUND BRILLIANT**

Measurements **8.21 - 8.25 X 5.02 MM**

GRADING RESULTS

Carat Weight **2.09 CARATS**

Color Grade **E**

Clarity Grade **VVS 2**

Cut Grade **IDEAL**

ADDITIONAL GRADING INFORMATION

Polish **EXCELLENT**

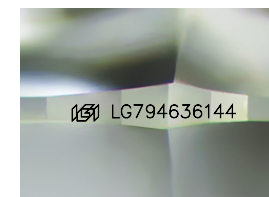
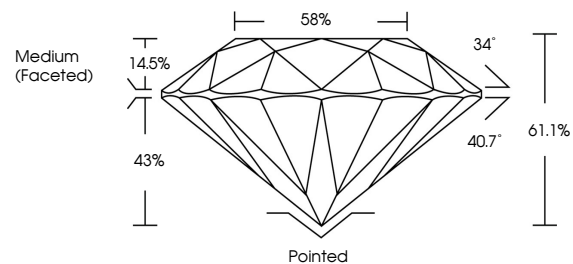
Symmetry **EXCELLENT**

Fluorescence **NONE**

Inscription(s) **IGI LG794636144**

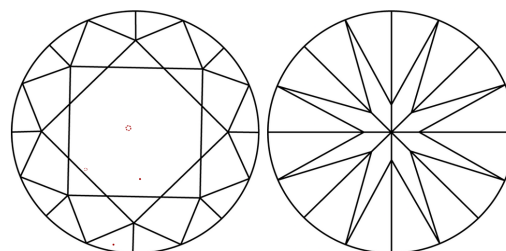
Comments: This Laboratory Grown Diamond was created by Chemical Vapor Deposition (CVD) growth process.
Type IIa

PROPORTIONS



Sample Image Used

CLARITY CHARACTERISTICS



KEY TO SYMBOLS

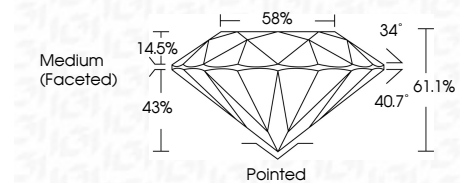
Red symbols indicate internal characteristics.
Green symbols indicate external characteristics.

COLOR

D E F G H I J Faint Very Light Light

CLARITY

FL	IF	VVS ¹⁻²	VS ¹⁻²	SI ¹⁻²	I ¹⁻³
Flawless	Internally Flawless	Very Very Slightly Included	Very Slightly Included	Slightly Included	Included



ADDITIONAL GRADING INFORMATION

Polish **EXCELLENT**

Symmetry **EXCELLENT**

Fluorescence **NONE**

Inscription(s) **IGI LG794636144**

Comments: This Laboratory Grown Diamond was created by Chemical Vapor Deposition (CVD) growth process.
Type IIa



IGI



May 7, 2026	IGI Report No LG794636144	2.09 CARATS	E	Pointed	EXCELLENT	EXCELLENT	NONE	IGI LG794636144
ROUND BRILLIANT	8.21 - 8.25 X 5.02 MM	Carat Weight	VVS 2	Cut Grade	IDEAL	61.1%	58%	Medium (Faceted)
		Color Grade	VVS 2	Clarity Grade	IDEAL	61.1%	58%	None
		Cut Grade	IDEAL	Depth	61.1%	58%	None	None
		Table	14.5%	Grade	None	None	None	None
		Polish	EXCELLENT	Symmetry	EXCELLENT	EXCELLENT	EXCELLENT	EXCELLENT
		Symmetry	EXCELLENT	Fluorescence	NONE	NONE	NONE	NONE
		Inscription(s)	IGI LG794636144					

Comments: This Laboratory Grown Diamond was created by Chemical Vapor Deposition (CVD) growth process.
Type IIa