



ELECTRONIC COPY

LG794636759 Report verification at igi.org



April 28, 2026 IGI Report Number LG794636759 Description LABORATORY GROWN DIAMOND

Shape and Cutting Style CUT CORNERED RECTANGULAR MODIFIED BRILLIANT

Measurements 11.24 X 7.99 X 5.22 MM

GRADING RESULTS

Carat Weight 4.07 CARATS Color Grade F Clarity Grade VS 1

April 28, 2026 IGI Report Number LG794636759 Description LABORATORY GROWN DIAMOND Shape and Cutting Style CUT CORNERED RECTANGULAR MODIFIED BRILLIANT Measurements 11.24 X 7.99 X 5.22 MM

GRADING RESULTS

Carat Weight 4.07 CARATS Color Grade F Clarity Grade VS 1

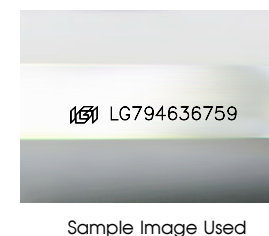
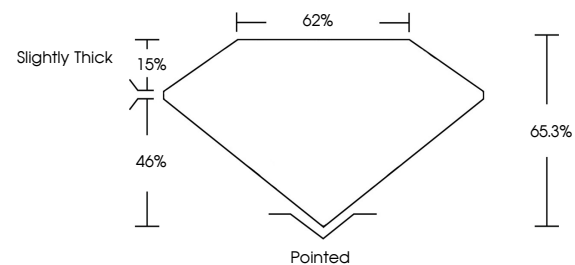
ADDITIONAL GRADING INFORMATION

Polish EXCELLENT Symmetry EXCELLENT Fluorescence NONE

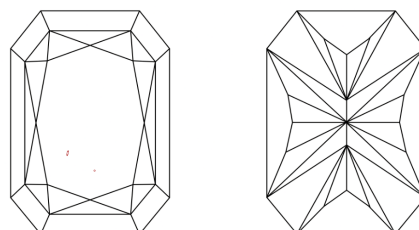
Inscription(s) IGI LG794636759

Comments: This Laboratory Grown Diamond was created by Chemical Vapor Deposition (CVD) growth process. Type IIa

PROPORTIONS



CLARITY CHARACTERISTICS



KEY TO SYMBOLS

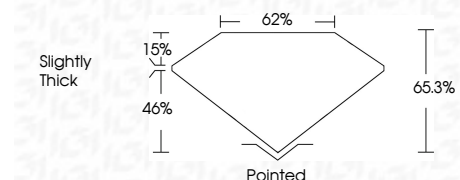
Red symbols indicate internal characteristics. Green symbols indicate external characteristics.

COLOR

D E F G H I J Faint Very Light Light

CLARITY

FL IF VS 1-2 VS 2-3 SI 1-2 I 1-3 Flawless Internally Flawless Very Very Slightly Included Very Slightly Included Slightly Included Included



ADDITIONAL GRADING INFORMATION

Polish EXCELLENT Symmetry EXCELLENT Fluorescence NONE Inscription(s) IGI LG794636759 Comments: This Laboratory Grown Diamond was created by Chemical Vapor Deposition (CVD) growth process. Type IIa



April 28, 2026 IGI Report No LG794636759 CUT CORNERED RECT. MODIFIED BRILLIANT 4.07 CARATS F VS 1 65.3% 62% Slightly Thick Pointed EXCELLENT EXCELLENT NONE IGI LG794636759 Comments: This Laboratory Grown Diamond was created by Chemical Vapor Deposition (CVD) growth process. Type IIa