



ELECTRONIC COPY

LG794637148  
Report verification at igi.org



May 4, 2026  
IGI Report Number **LG794637148**  
Description **LABORATORY GROWN DIAMOND**  
Shape and Cutting Style **SQUARE MIXED CUT**  
Measurements **7.05 X 7.02 X 5.39 MM**  
**GRADING RESULTS**  
Carat Weight **2.08 CARATS**  
Color Grade **FANCY LIGHT BROWN**  
Clarity Grade **VS 2**

May 4, 2026  
IGI Report Number **LG794637148**  
Description **LABORATORY GROWN DIAMOND**  
Shape and Cutting Style **SQUARE MIXED CUT**  
Measurements **7.05 X 7.02 X 5.39 MM**

GRADING RESULTS

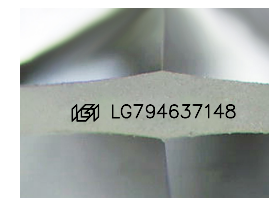
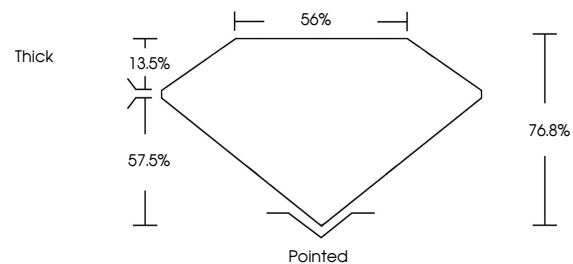
Carat Weight **2.08 CARATS**  
Color Grade **FANCY LIGHT BROWN**  
Clarity Grade **VS 2**

ADDITIONAL GRADING INFORMATION

Polish **EXCELLENT**  
Symmetry **VERY GOOD**  
Fluorescence **NONE**  
Inscription(s) **IGI LG794637148**

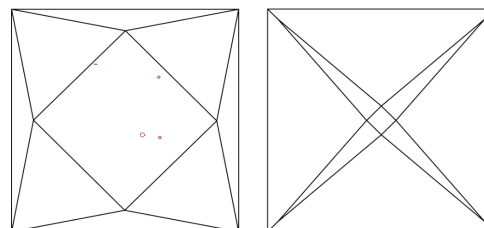
Comments: This Laboratory Grown Diamond was created by Chemical Vapor Deposition (CVD) growth process.  
Indications of post-growth treatment.

PROPORTIONS



Sample Image Used

CLARITY CHARACTERISTICS



KEY TO SYMBOLS

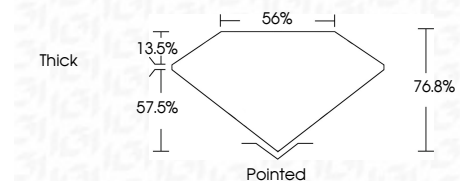
Red symbols indicate internal characteristics.  
Green symbols indicate external characteristics.

COLOR

D E F G H I J Faint Very Light Light

CLARITY

FL IF VS<sup>1-2</sup> VS<sup>1-2</sup> SI<sup>1-2</sup> I<sup>1-3</sup>  
Flawless Internally Flawless Very Very Slightly Included Very Slightly Included Slightly Included Included



ADDITIONAL GRADING INFORMATION

Polish **EXCELLENT**  
Symmetry **VERY GOOD**  
Fluorescence **NONE**  
Inscription(s) **IGI LG794637148**  
Comments: This Laboratory Grown Diamond was created by Chemical Vapor Deposition (CVD) growth process.  
Indications of post-growth treatment.



May 4, 2026  
IGI Report No **LG794637148**  
**SQUARE MIXED CUT**  
**2.08 CARATS**  
Carat Weight **FANCY LIGHT BROWN**  
Color Grade **VS 2**  
Depth **76.8%**  
Table **55%**  
Girdle **Thick**  
Culet **Pointed**  
Polish **EXCELLENT**  
Symmetry **VERY GOOD**  
Fluorescence **NONE**  
Inscription(s) **IGI LG794637148**  
Comments: This Laboratory Grown Diamond was created by Chemical Vapor Deposition (CVD) growth process.  
Indications of post-growth treatment.