



**ELECTRONIC COPY**

LG794637497  
Report verification at igi.org



May 6, 2026  
IGI Report Number **LG794637497**  
Description **LABORATORY GROWN DIAMOND**  
Shape and Cutting Style **SQUARE CUSHION MODIFIED BRILLIANT**  
Measurements **9.73 X 9.41 X 6.35 MM**  
**GRADING RESULTS**  
Carat Weight **5.52 CARATS**  
Color Grade **FANCY BROWN**  
Clarity Grade **VS 1**

**LABORATORY GROWN DIAMOND REPORT**

May 6, 2026  
IGI Report Number **LG794637497**  
Description **LABORATORY GROWN DIAMOND**  
Shape and Cutting Style **SQUARE CUSHION MODIFIED BRILLIANT**  
Measurements **9.73 X 9.41 X 6.35 MM**

**GRADING RESULTS**

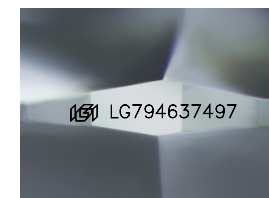
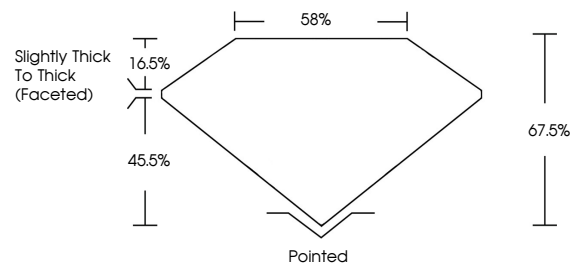
Carat Weight **5.52 CARATS**  
Color Grade **FANCY BROWN**  
Clarity Grade **VS 1**

**ADDITIONAL GRADING INFORMATION**

Polish **EXCELLENT**  
Symmetry **EXCELLENT**  
Fluorescence **NONE**  
Inscription(s) **IGI LG794637497**

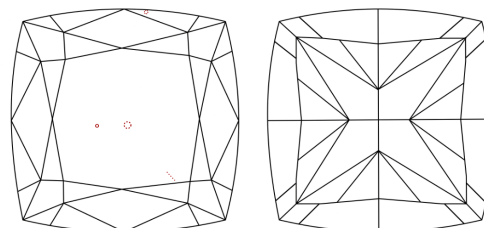
Comments: This Laboratory Grown Diamond was created by Chemical Vapor Deposition (CVD) growth process.  
Indications of post-growth treatment.

**PROPORTIONS**



Sample Image Used

**CLARITY CHARACTERISTICS**



**KEY TO SYMBOLS**

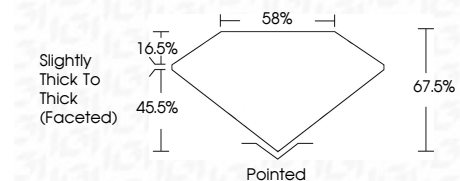
Red symbols indicate internal characteristics.  
Green symbols indicate external characteristics.

**COLOR**

D E F G H I J Faint Very Light Light

**CLARITY**

FL	IF	VS <sup>1-2</sup>	VS <sup>1-2</sup>	SI <sup>1-2</sup>	I <sup>1-3</sup>
Flawless	Internally Flawless	Very Very Slightly Included	Very Slightly Included	Slightly Included	Included



**ADDITIONAL GRADING INFORMATION**

Polish **EXCELLENT**  
Symmetry **EXCELLENT**  
Fluorescence **NONE**  
Inscription(s) **IGI LG794637497**  
Comments: This Laboratory Grown Diamond was created by Chemical Vapor Deposition (CVD) growth process.  
Indications of post-growth treatment.



May 6, 2026  
IGI Report No. LG794637497  
**SQUARE CUSHION MODIFIED BRILLIANT**  
9.73 X 9.41 X 6.35 MM  
5.52 CARATS  
FANCY BROWN  
VS 1  
67.5%  
85%  
Slightly Thick To Thick (Faceted)  
Pointed  
EXCELLENT  
EXCELLENT  
NONE  
IGI LG794637497  
Comments: This Laboratory Grown Diamond was created by Chemical Vapor Deposition (CVD) growth process.  
Indications of post-growth treatment.