



ELECTRONIC COPY

LG794642719
Report verification at igi.org

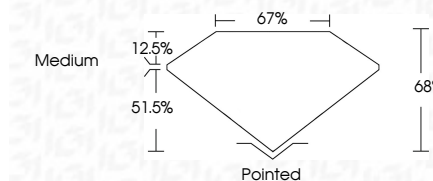


April 24, 2026
IGI Report Number LG794642719
Description LABORATORY GROWN DIAMOND
Shape and Cutting Style CUT CORNERED RECTANGULAR MODIFIED BRILLIANT

Measurements 13.08 X 9.27 X 6.30 MM

GRADING RESULTS

Carat Weight 6.59 CARATS
Color Grade F
Clarity Grade VVS 1

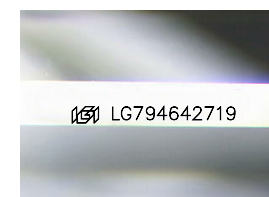


ADDITIONAL GRADING INFORMATION

Polish EXCELLENT
Symmetry EXCELLENT
Fluorescence NONE
Inscription(s) IGI LG794642719
Comments: This Laboratory Grown Diamond was created by Chemical Vapor Deposition (CVD) growth process. Type IIa

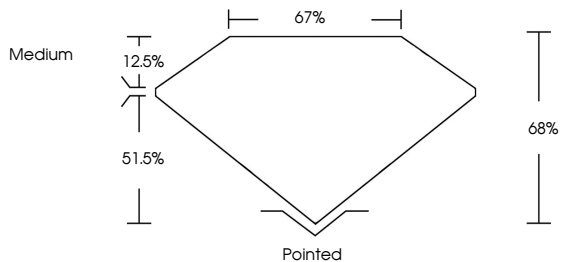


April 24, 2026
IGI Report No LG794642719
CUT CORNERED RECT. MODIFIED BRILLIANT
13.08 X 9.27 X 6.30 MM
6.59 CARATS F
VVS 1 68% 67%
Medium
Pointed
EXCELLENT EXCELLENT
NONE
IGI LG794642719
Comments: This Laboratory Grown Diamond was created by Chemical Vapor Deposition (CVD) growth process. Type IIa

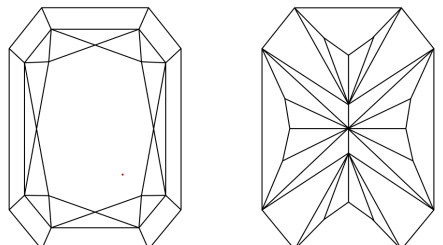


Sample Image Used

PROPORTIONS



CLARITY CHARACTERISTICS



KEY TO SYMBOLS

Red symbols indicate internal characteristics.
Green symbols indicate external characteristics.

COLOR

Table with color scale: D, E, F, G, H, I, J, Faint, Very Light, Light

CLARITY

Table with clarity scale: FL, IF, VVS 1-2, VS 1-2, SI 1-2, I 1-3, Flawless, Internally Flawless, Very Very Slightly Included, Very Slightly Included, Slightly Included, Included

