



**LABORATORY GROWN DIAMOND REPORT**

April 22, 2026  
 IGI Report Number **LG794656208**  
 Description **LABORATORY GROWN DIAMOND**  
 Shape and Cutting Style **ROUND BRILLIANT**  
 Measurements **6.34 - 6.38 X 3.92 MM**

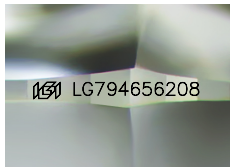
**GRADING RESULTS**

Carat Weight **0.98 CARAT**  
 Color Grade **E**  
 Clarity Grade **VS 2**  
 Cut Grade **EXCELLENT**

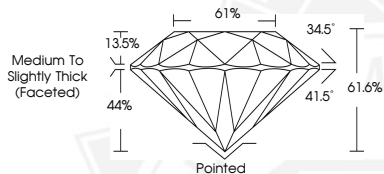
**ADDITIONAL GRADING INFORMATION**

Polish **EXCELLENT**  
 Symmetry **EXCELLENT**  
 Fluorescence **NONE**  
 Inscription(s) **IGI LG794656208**

Comments: This Laboratory Grown Diamond was created by  
 Chemical Vapor Deposition (CVD) growth process.  
 Type IIa



Sample Image Used



April 22, 2026  
 IGI Report Number **LG794656208**  
 ROUND BRILLIANT  
 LABORATORY GROWN DIAMOND  
**6.34 - 6.38 X 3.92 MM**  
 Carat Weight **0.98 CARAT**  
 Color Grade **E**  
 Clarity Grade **VS 2**  
 Cut Grade **EXCELLENT**  
 Polish **EXCELLENT**  
 Symmetry **EXCELLENT**  
 Fluorescence **NONE**  
 Inscription(s) **IGI LG794656208**  
 Comments: This Laboratory Grown  
 Diamond was created by  
 Chemical Vapor Deposition (CVD)  
 growth process. Type IIa



April 22, 2026  
 IGI Report Number **LG794656208**  
 ROUND BRILLIANT  
 LABORATORY GROWN DIAMOND  
**6.34 - 6.38 X 3.92 MM**  
 Carat Weight **0.98 CARAT**  
 Color Grade **E**  
 Clarity Grade **VS 2**  
 Cut Grade **EXCELLENT**  
 Polish **EXCELLENT**  
 Symmetry **EXCELLENT**  
 Fluorescence **NONE**  
 Inscription(s) **IGI LG794656208**  
 Comments: This Laboratory Grown  
 Diamond was created by  
 Chemical Vapor Deposition (CVD)  
 growth process. Type IIa

THIS DOCUMENT WAS PRODUCED WITH THE FOLLOWING SECURITY MEASURES: SPECIAL DOCUMENT PAPER, INK SCREENS, WATERMARK, BACKGROUND DESIGNS, HOLOGRAM AND OTHER SECURITY FEATURES NOT LISTED AND DO EXCEED DOCUMENT SECURITY INDUSTRY GUIDELINES.