



ELECTRONIC COPY

LG794656825
Report verification at igi.org



April 22, 2026

IGI Report Number **LG794656825**

Description **LABORATORY GROWN DIAMOND**

Shape and Cutting Style **MARQUISE BRILLIANT**

Measurements **11.44 X 5.53 X 3.39 MM**

GRADING RESULTS

Carat Weight **1.21 CARAT**

Color Grade **E**

Clarity Grade **VVS 1**

April 22, 2026

IGI Report Number **LG794656825**

Description **LABORATORY GROWN DIAMOND**

Shape and Cutting Style **MARQUISE BRILLIANT**

Measurements **11.44 X 5.53 X 3.39 MM**

GRADING RESULTS

Carat Weight **1.21 CARAT**

Color Grade **E**

Clarity Grade **VVS 1**

ADDITIONAL GRADING INFORMATION

Polish **EXCELLENT**

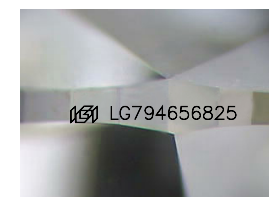
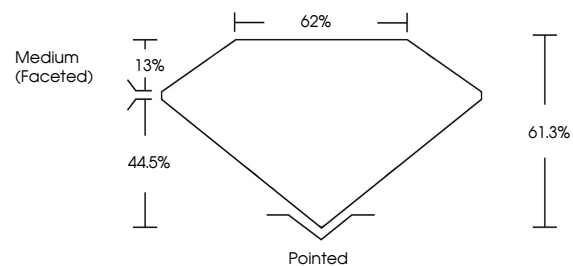
Symmetry **EXCELLENT**

Fluorescence **NONE**

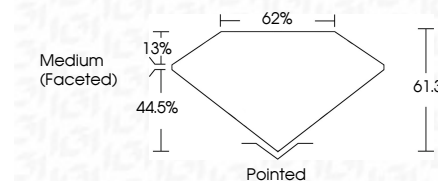
Inscription(s) **IGI LG794656825**

Comments: This Laboratory Grown Diamond was created by Chemical Vapor Deposition (CVD) growth process.
Type IIa

PROPORTIONS



Sample Image Used



COLOR

D E F G H I J Faint Very Light Light

CLARITY

FL	IF	VVS ¹⁻²	VS ¹⁻²	SI ¹⁻²	I ¹⁻³
Flawless	Internally Flawless	Very Very Slightly Included	Very Slightly Included	Slightly Included	Included

ADDITIONAL GRADING INFORMATION

Polish **EXCELLENT**

Symmetry **EXCELLENT**

Fluorescence **NONE**

Inscription(s) **IGI LG794656825**

Comments: This Laboratory Grown Diamond was created by Chemical Vapor Deposition (CVD) growth process.
Type IIa



April 22, 2026
IGI Report No LG794656825
MARQUISE BRILLIANT

11.44 X 5.53 X 3.39 MM
1.21 CARAT
E
VVS 1
61.0%
62%
Medium (Faceted)

Pointed
EXCELLENT
EXCELLENT
NONE
IGI LG794656825

Comments: This Laboratory Grown Diamond was created by Chemical Vapor Deposition (CVD) growth process.
Type IIa