



**ELECTRONIC COPY**

LG794663245  
Report verification at igi.org



April 22, 2026

IGI Report Number **LG794663245**

Description **LABORATORY GROWN DIAMOND**

Shape and Cutting Style **PRINCESS CUT**

Measurements **6.11 X 6.07 X 4.37 MM**

**GRADING RESULTS**

Carat Weight **1.41 CARAT**

Color Grade **D**

Clarity Grade **VVS 1**

April 22, 2026

IGI Report Number **LG794663245**

Description **LABORATORY GROWN DIAMOND**

Shape and Cutting Style **PRINCESS CUT**

Measurements **6.11 X 6.07 X 4.37 MM**

**GRADING RESULTS**

Carat Weight **1.41 CARAT**

Color Grade **D**

Clarity Grade **VVS 1**

**ADDITIONAL GRADING INFORMATION**

Polish **EXCELLENT**

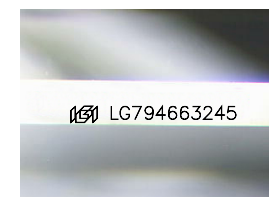
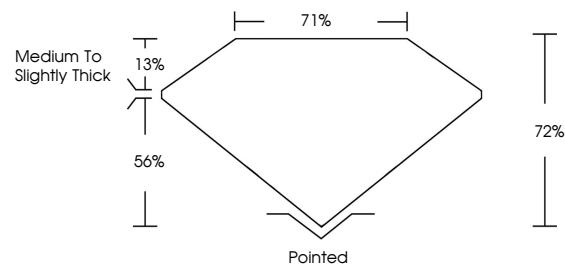
Symmetry **EXCELLENT**

Fluorescence **NONE**

Inscription(s) **IGI LG794663245**

Comments: This Laboratory Grown Diamond was created by Chemical Vapor Deposition (CVD) growth process.  
Type IIa

**PROPORTIONS**



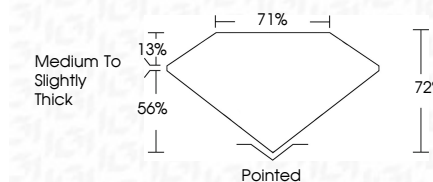
Sample Image Used

**COLOR**

D E F G H I J Faint Very Light Light

**CLARITY**

FL	IF	VS <sup>1-2</sup>	VS <sup>1-2</sup>	SI <sup>1-2</sup>	I <sup>1-3</sup>
Flawless	Internally Flawless	Very Very Slightly Included	Very Slightly Included	Slightly Included	Included



**ADDITIONAL GRADING INFORMATION**

Polish **EXCELLENT**

Symmetry **EXCELLENT**

Fluorescence **NONE**

Inscription(s) **IGI LG794663245**

Comments: This Laboratory Grown Diamond was created by Chemical Vapor Deposition (CVD) growth process.  
Type IIa



**IGI**



April 22, 2026  
IGI Report No. LG794663245  
PRINCESS CUT

6.11 X 6.07 X 4.37 MM

1.41 CARAT

D

VVS 1

72%

71%

Medium to Slightly Thick

Pointed

EXCELLENT

EXCELLENT

NONE

IGI LG794663245

Comments: This Laboratory Grown Diamond was created by Chemical Vapor Deposition (CVD) growth process.  
Type IIa